

# K209 Adults'/Kids' Aprons

Cook up loads of family fun with these colorful aprons! Features include appliques, ruffles and hours of smiles.

These aprons are **designed for lightweight woven fabrics** such as cotton, cotton types.

## Body Measurements:

SIZES:	S	M	L	XL
Waist-Adults	28"-30" (71-76 cm)	32"-34" (81-86 cm)	36"-38" (91-96 cm)	40"-42" (101-106 cm)

## Materials needed:

### APRON A (Adults)

#### FABRIC 45" (115 cm) WIDE

Fabric 1 1<sup>1</sup>/<sub>8</sub> yd (1.1 m) 1<sup>1</sup>/<sub>8</sub> yd (1.1 m) 1<sup>1</sup>/<sub>8</sub> yd (1.1 m) 1<sup>1</sup>/<sub>4</sub> yd (1.2 m)

Fabric 2 - 5/8 yd (0.6 m)

#### FABRIC 60" (152 cm) WIDE

Fabric 1 1<sup>1</sup>/<sub>8</sub> yd (1.1 m) 1<sup>1</sup>/<sub>8</sub> yd (1.1 m) 1<sup>1</sup>/<sub>8</sub> yd (1.1 m) 1<sup>1</sup>/<sub>4</sub> yd (1.2 m)

Fabric 2 - 3/8 yd (0.4 m)

### APRON B (Adults)

#### FABRIC 45", 60" (115, 152 cm) WIDE

Fabric 1 - 1<sup>1</sup>/<sub>4</sub> yd (1.2 m)

Fabric 2 - 7/8 yd (0.8 m)

Fabric 3 - 3/4 yd (0.7 m)

Fabric 4 - 5/8 yd (0.6 m)

Fusible Interfacing - 4" x 11" (10 cm x 28 cm)

## Additional items you will need:

Scrap Fabric for tie applique, paper-backed fusible webbing and tear-away material.

## Body Measurements:

SIZES:	XS	S	M	L
Waist-Kids	22" (56 cm)	23" (58 cm)	24" (61 cm)	25" (64 cm)

## Materials needed:

### APRON A (Kids)

#### FABRIC 45", 60" (115, 152 cm) WIDE

Fabric 1 - 1 yd (1.0 m)

Fabric 2 - 3/8 yd (0.4 m)

### APRON B (Kids)

#### FABRIC 45", 60" (115, 152 cm) WIDE

Fabric 1 - 1 yd (1.0 m)

Fabric 2 - 5/8 yd (0.6 m)

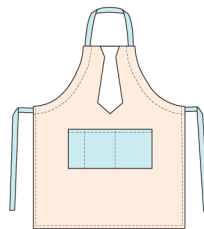
Fabric 3 - 1/2 yd (0.5 m)

Fabric 4 - 1/2 yd (0.5 m)

Fusible Interfacing - 4" x 8" (10 cm x 21 cm)

## Additional items you will need:

Three buttons; 1" (2.5 cm) for adults' and 3/4" (2 cm) for kids'.



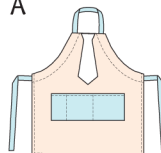
A

♥ Fabric 1

♥ Fabric 2

♥ Fabric 3

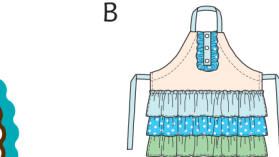
♥ Fabric 4



A



B



B

