

MARTIN

Pantalon d'intérieur et caleçon boxeur sans couture au milieu dos pour plus de confort. Taille élastique, fausse braguette et poche appliquée au dos. Un patron idéal pour débuter en couture.

tailles - sizes

Relaxed-fit pants and boxers with elastic waist, faux fly, rear patch pocket.

F - GG

This pattern has no center back seam, for more comfort. A great project for beginners.

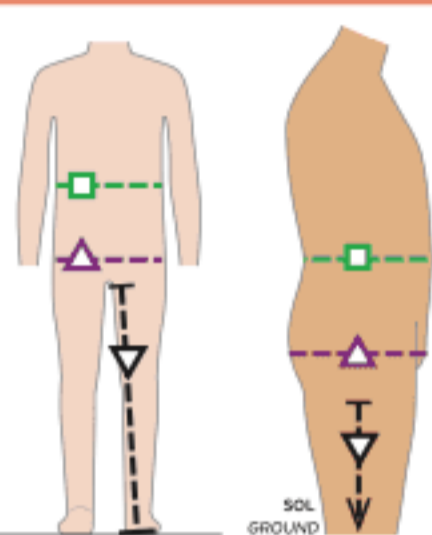
## MESURES DU CORPS (ENFANTS ET ADOS) - BODY MEASUREMENTS (CHILDREN AND TEENS)

Âge approximatif - Approximate age 2 3 4 5 6 7 8 9 10 11 12 13

Tailles européennes - European sizes 92 98 104 112 119 127 135 142 146 150 152 155

## TAILLE JALIE - JALIE SIZES

	F	G	H	I	J	K	L	M	N	O	P	Q
<b>TAILLE (PLUS FIN)</b> WAIST (SMALLEST)	20 3/4"	21 3/4"	21 3/4"	22 1/4"	22 3/4"	23 1/4"	23 3/4"	24 3/4"	25"	25 1/4"	26 3/4"	27 1/4"
<b>HANCHES (PLUS FORT)</b> HIPS (FULLEST)	20 3/4"	22 1/4"	23 3/4"	24 3/4"	25 3/4"	27 1/4"	28 3/4"	29 3/4"	30 3/4"	31 3/4"	32 3/4"	33 3/4"
<b>ENTREJAMBE (AU SOL)</b> INSEAM (TO THE FLOOR)	13 3/4"	15"	16 1/2"	18 3/4"	19 3/4"	21 3/4"	23 3/4"	25 1/4"	26 3/4"	28"	29 1/2"	31 1/4"



Choisir la taille Jalie (lettre) qui correspond à la mesure des hanches. Ajuster à la taille si nécessaire.

Choose the Jalie size (letter) closest to the hips measurement. Adjust for waist if necessary.

## TISSUS REQUIS - YARDAGE

		F	G	H	I	J	K	L	M	N	O	P	Q
58" 147 cm	<b>CALEÇON BOXEUR</b> BOXER SHORTS	1/2 yd	1/2 yd	1/2 yd	1/2 yd	1/2 yd	3/4 yd	3/4 yd	3/4 yd	3/4 yd	3/4 yd	3/4 yd	1 yd
	<b>PANTALON</b> PANTS	1 yd	1 yd	1 yd	1 yd	1 1/4 yd	1 1/4 yd	1 1/4 yd	1 1/4 yd	1 1/4 yd	1 1/2 yd	1 1/2 yd	1 3/4 yd
43" 105 cm	<b>CALEÇON BOXEUR</b> BOXER SHORTS	3/4 yd	3/4 yd	3/4 yd	3/4 yd	3/4 yd	1 yd	1 yd	1 yd	1 1/4 yd	1 1/4 yd	1 1/2 yd	1 1/2 yd
	<b>PANTALON</b> PANTS	1	1 1/4 yd	1 1/2 yd	1 3/4 yd	1 3/4 yd	2 yd	2 yd	2 1/4 yd	2 1/4 yd	2 1/2 yd	2 1/2 yd	2 3/4 yd

## MESURES DU CORPS (ADULTES) - BODY MEASUREMENTS (ADULTS)

Prêt-à-porter APPROX. US size XS (28-30) S (30-32) M (32-35) L (36-40) 1X (40-44) 2X (46-50)

Tailles euro - European sizes 38 40 42 44 46 48 50 52 54 56 58 60

TAILLE JALIE - JALIE SIZES R S T U V W X Y Z AA BB CC DD EE FF GG

<b>TAILLE (PLUS FIN)</b> WAIST (SMALLEST)	28"	28 3/4"	29 1/4"	30 3/4"	31 1/2"	32 3/4"	33 3/4"	34 3/4"	36 3/4"	37 3/4"	39 3/4"	41"	42 1/2"	44 3/4"	47 3/4"	50"
<b>HANCHES (PLUS FORT)</b> HIPS (FULLEST)	32 3/4"	33 3/4"	34 3/4"	35 3/4"	36 3/4"	37 3/4"	38 3/4"	39 3/4"	40 3/4"	41 3/4"	42 3/4"	43 3/4"	44 3/4"	46 3/4"	47 3/4"	48 3/4"
<b>ENTREJAMBE (AU SOL)</b> INSEAM (TO THE FLOOR)	32 3/4"	33 3/4"	33 3/4"	33 3/4"	33 3/4"	33 3/4"	33 3/4"	33 3/4"	32 3/4"	32 3/4"	32 3/4"	31 3/4"	31 3/4"	31 3/4"	31 3/4"	31 3/4"

## TISSU REQUIS - YARDAGE

58" 147 cm	<b>CALEÇON BOXEUR</b> BOXER SHORTS	1 yd	1 yd	1 yd	1 yd	1 yd	1 yd	1 1/4 yd	1 1/4 yd	1 1/4 yd	1 1/4 yd	1 1/4 yd	1 1/4 yd	1 1/2 yd	1 3/4 yd	1 3/4 yd
	<b>PANTALON</b> PANTS	1 3/4 yd	1 3/4 yd	2 yd	2 1/4 yd	2 1/4 yd	2 1/2 yd	2 1/2 yd	2 3/4 yd	2 3/4 yd	2 3/4 yd	2 3/4 yd	2 3/4 yd	2 3/4 yd	2 3/4 yd	2 3/4 yd
43" 105 cm	<b>CALEÇON BOXEUR</b> BOXER SHORTS	1 1/2 yd	1 1/2 yd	1 1/2 yd	1 1/2 yd	1 1/2 yd	1 1/2 yd	1 1/2 yd	1 1/2 yd	1 1/2 yd	1 1/2 yd	1 1/2 yd	1 1/2 yd	1 3/4 yd	2 1/4 yd	2 1/4 yd
	<b>PANTALON</b> PANTS	2 3/4 yd	2 3/4 yd	3 yd	3 yd	3 yd	3 yd	3 yd	3 yd	3 yd	3 1/4 yd	3 1/4 yd	3 1/4 yd	3 1/4 yd	3 1/4 yd	3 1/4 yd

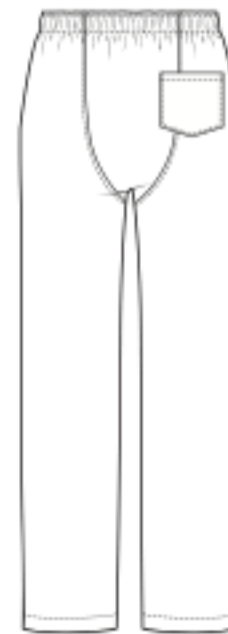
TISSUS RECOMMANDÉS  
RECOMMENDED FABRICS

Coton léger, popeline,  
flanelle de coton,  
flannelette, finette

Lightweight cotton, poplin  
cotton flannel, flannelette,



DOS - BACK



DOS - BACK

## MERCERIE - NOTIONS

F - H	ÉLASTIQUE 25 mm - 1" ELASTIC	
	60 cm (24")	
I - O	ÉLASTIQUE 32 mm - 1 1/4" ELASTIC	
	70 cm (28")	
P - GG	ÉLASTIQUE 38 mm - 1 1/2" ELASTIC	
	130 cm (52")	
BOUTON 12 mm (facultatif) 1/2" BUTTON (optional)		1 X

PRÊT À COUDRE // READY TO SEW

Valeurs de couture 1 cm / (3/8") incluses dans le patron  
1 cm (3/8") seam allowances included in the pattern



5004132

Jalie  
PATRONS DE COUTURE  
COUTURE PATTERNS

© 2021 LES PATRONS JALIE INC.

www.jalie.com

IMPRIMÉ AU CANADA / PRINTED IN CANADA