

Haut et robe à encolure ronde, avec ou sans mancheron. L'encolure est finie avec une bordure au devant, parementure au dos.

A: Haut avec ourlet au-dessus des hanches B: Robe au genou avec poches facultatives.

Portez-la en version relaxe ou avec la ceinture pour cintrer à la taille. Un vêtement versatile qui peut être chic et décontracté à la fois.

Round-neck top and dress with or without cap sleeves. The neckline is finished with binding in the front and facing in the back

A: Top that hits above the hips B: Knee-length dress with optional pockets. Wear it loose or with the belt to cinch the waist.

A very versatile pattern you can dress up or down.

MESURES DU CORPS (FILLES) - BODY MEASUREMENTS (GIRLS)

| Âge approximatif - Approximate age   | 2   | 3   | 4       | 5   | 6       | 7   | 8       | 9   | 10      | 11      | 12      | 13      |         |
|--------------------------------------|---|-----|---------|-----|---------|-----|---------|-----|---------|---------|---------|---------|---------|
| Tailles européennes - European sizes | 92  | 98  | 104     | 112 | 119     | 127 | 135     | 142 | 146     | 150     | 152     | 155     |         |
| TAILLE JALIE - JALIE SIZES           | F   | G   | H       | I   | J       | K   | L       | M   | N       | O       | P       | Q       |         |
|                                      | <b>1</b> TOUR DE POITRINE<br>FULL BUST            | 21" | 22"     | 23" | 24"     | 25" | 26"     | 27" | 28"     | 29"     | 30"     | 31"     | 32"     |
|                                      | <b>2</b> TOUR DE TAILLE<br>NATURAL WAIST          | 20" | 20 1/2" | 21" | 21 1/2" | 22" | 22 1/2" | 23" | 23 3/4" | 24 1/2" | 25 1/4" | 25 3/4" | 26 1/2" |
|                                      | <b>3</b> TOUR DES HANCHES<br>FULL HIPS            | 22" | 23"     | 24" | 25"     | 26" | 27"     | 28" | 29 1/2" | 30 1/2" | 32"     | 33"     | 34 1/2" |
|                                      | <b>4</b> TRONC (DEVANT+DOS)<br>TORSO (FRONT+BACK) | 35" | 37"     | 39" | 41"     | 43" | 45"     | 47" | 48 3/4" | 50 1/2" | 52"     | 53 3/4" | 55 1/2" |

TISSU REQUIS - YARDAGE

|   |        |                         |                |                    |                    |                    |                    |                    |                    |                    |                    |                    |                    |                    |
|---|--------|-------------------------|----------------|--------------------|--------------------|--------------------|--------------------|--------------------|--------------------|--------------------|--------------------|--------------------|--------------------|--------------------|
| <p>Tissus légers et souples: mélange / effet lin, twill de rayonne, tencel lyocell<br/>Light-weight fabrics with a soft hand and nice drape: linen blends, rayon/viscose twill, tencel lyocell.</p> | 45"    | HAUT (A)<br>TOP (A)     | 1 yd<br>0.75 m | 1 yd<br>0.75 m     | 1 yd<br>0.80 m     | 1 yd<br>0.85 m     | 1 yd<br>0.90 m     | 1 yd<br>0.90 m     | 1 yd<br>0.90 m     | 1 yd<br>0.95 m     | 1 1/4 yd<br>0.95 m | 1 1/4 yd<br>1.00 m | 1 1/4 yd<br>1.00 m | 1 1/4 yd<br>1.05 m |
|   | 115 cm | ROBE (B)*<br>DRESS (B)* | 1 yd<br>0.85 m | 1 1/4 yd<br>0.95 m | 1 1/4 yd<br>1.00 m | 1 1/4 yd<br>1.10 m | 1 1/4 yd<br>1.20 m | 1 1/2 yd<br>1.25 m | 1 1/2 yd<br>1.30 m | 1 1/2 yd<br>1.35 m | 1 3/4 yd<br>1.40 m | 1 3/4 yd<br>1.45 m | 1 3/4 yd<br>1.50 m | 1 3/4 yd<br>1.55 m |
|   | 58"    | HAUT (A)<br>TOP (A)     | 1 yd<br>0.75 m | 1 yd<br>0.75 m     | 1 yd<br>0.80 m     | 1 yd<br>0.85 m     | 1 yd<br>0.90 m     | 1 yd<br>0.90 m     | 1 yd<br>0.90 m     | 1 1/4 yd<br>0.95 m | 1 1/4 yd<br>0.95 m | 1 1/4 yd<br>1.00 m | 1 1/4 yd<br>1.00 m | 1 1/4 yd<br>1.05 m |
|   | 147 cm | ROBE (B)*<br>DRESS (B)* | 1 yd<br>0.85 m | 1 1/4 yd<br>0.95 m | 1 1/4 yd<br>1.00 m | 1 1/4 yd<br>1.10 m | 1 1/4 yd<br>1.20 m | 1 1/2 yd<br>1.25 m | 1 1/2 yd<br>1.30 m | 1 1/2 yd<br>1.35 m | 1 3/4 yd<br>1.40 m | 1 3/4 yd<br>1.45 m | 1 3/4 yd<br>1.50 m | 1 3/4 yd<br>1.50 m |

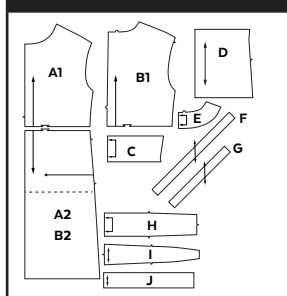
MESURES DU CORPS (FEMMES) - BODY MEASUREMENTS (WOMEN)

| Taille US APPROX. US size                         | 2                 | 4             | 6                 | 8             | 10                | 12            | 14                | 16                | 18                | 20                | 22               | 24                |                   |                   |                   |               |
|---|-------------------|---------------|-------------------|---------------|-------------------|---------------|-------------------|-------------------|-------------------|-------------------|------------------|-------------------|-------------------|-------------------|-------------------|---------------|
| Prêt-à-porter APPROX. RTW size                    | XS                |               | S                 |               | M                 |               | L                 |                   | XL                |                   | 2XL              |                   |                   |                   |                   |               |
| Tailles euro - European sizes                     | 34                | 36            | 38                | 40            | 42                | 44            | 46                | 48                | 50                | 52                | 54               | 56                |                   |                   |                   |               |
| TAILLE JALIE - JALIE SIZES                        | R                 | S             | T                 | U             | V                 | W             | X                 | Y                 | Z                 | AA                | BB               | CC                | DD                | EE                | FF                | GG            |
| <b>1</b> TOUR DE POITRINE<br>FULL BUST            | 33"<br>84 cm      | 34"<br>86 cm  | 35"<br>89 cm      | 36"<br>91 cm  | 37"<br>94 cm      | 38"<br>96 cm  | 39"<br>99 cm      | 40"<br>102 cm     | 41 1/2"<br>106 cm | 42 3/4"<br>109 cm | 44"<br>112 cm    | 45 1/2"<br>116 cm | 46 3/4"<br>119 cm | 48 1/4"<br>123 cm | 49 1/2"<br>126 cm | 51"<br>130 cm |
| <b>2</b> TOUR DE TAILLE<br>NATURAL WAIST          | 27"<br>69 cm      | 28"<br>71 cm  | 29"<br>74 cm      | 30"<br>76 cm  | 31"<br>78 cm      | 32"<br>81 cm  | 33"<br>84 cm      | 34"<br>86 cm      | 35 1/4"<br>89 cm  | 36 1/2"<br>93 cm  | 37 3/4"<br>96 cm | 39"<br>99 cm      | 40 1/4"<br>102 cm | 41 1/2"<br>105 cm | 42 3/4"<br>109 cm | 44"<br>112 cm |
| <b>3</b> TOUR DES HANCHES<br>FULL HIPS            | 36"<br>91 cm      | 37"<br>94 cm  | 38"<br>96 cm      | 39"<br>99 cm  | 40"<br>102 cm     | 41"<br>104 cm | 42"<br>106 cm     | 43"<br>109 cm     | 44 1/2"<br>113 cm | 45 3/4"<br>116 cm | 47"<br>120 cm    | 48 1/2"<br>123 cm | 49 3/4"<br>126 cm | 51 1/4"<br>130 cm | 52 3/4"<br>134 cm | 54"<br>137 cm |
| <b>4</b> TRONC (DEVANT+DOS)<br>TORSO (FRONT+BACK) | 57 1/4"<br>145 cm | 59"<br>150 cm | 59 1/2"<br>152 cm | 60"<br>153 cm | 60 1/2"<br>154 cm | 61"<br>155 cm | 61 1/2"<br>156 cm | 62 1/2"<br>159 cm | 63 1/2"<br>161 cm | 64"<br>163 cm     | 65"<br>165 cm    | 65 3/4"<br>167 cm | 66 1/2"<br>169 cm | 67 1/4"<br>171 cm | 68 1/4"<br>173 cm | 69"<br>175 cm |

TISSU REQUIS - YARDAGE

|        |                         |                    |                    |                    |                    |                    |                    |                    |                    |                    |                    |                    |                    |                    |                    |                    |                    |
|--------|-------------------------|--------------------|--------------------|--------------------|--------------------|--------------------|--------------------|--------------------|--------------------|--------------------|--------------------|--------------------|--------------------|--------------------|--------------------|--------------------|--------------------|
| 45"    | HAUT (A)<br>TOP (A)     | 1 1/4 yd<br>1.05 m | 1 1/4 yd<br>1.10 m | 1 1/4 yd<br>1.10 m | 2 yd<br>1.65 m     | 2 yd<br>1.75 m     | 2 yd<br>1.75 m     | 2 yd<br>1.75 m     | 2 yd<br>1.75 m     | 2 yd<br>1.75 m     | 2 yd<br>1.75 m     | 2 yd<br>1.80 m     | 2 yd<br>1.80 m     | 2 1/4 yd<br>1.85 m | 2 1/4 yd<br>1.90 m | 2 1/4 yd<br>1.95 m | 2 1/4 yd<br>1.95 m |
| 115 cm | ROBE (B)*<br>DRESS (B)* | 2 1/2 yd<br>2.35 m | 2 3/4 yd<br>2.40 m | 2 3/4 yd<br>2.40 m | 2 3/4 yd<br>2.45 m | 2 3/4 yd<br>2.45 m | 2 3/4 yd<br>2.45 m | 2 3/4 yd<br>2.50 m | 2 3/4 yd<br>2.50 m | 2 3/4 yd<br>2.50 m | 2 3/4 yd<br>2.50 m | 3 yd<br>2.55 m     | 3 yd<br>2.55 m     | 3 yd<br>2.60 m     | 3 yd<br>2.60 m     | 3 yd<br>2.60 m     | 3 yd<br>2.60 m     |
| 58"    | HAUT (A)<br>TOP (A)     | 1 1/4 yd<br>1.05 m | 1 1/4 yd<br>1.05 m | 1 1/4 yd<br>1.10 m | 1 1/4 yd<br>1.10 m | 1 1/4 yd<br>1.10 m | 1 1/2 yd<br>1.20 m | 1 1/2 yd<br>1.20 m | 1 1/2 yd<br>1.20 m | 1 1/2 yd<br>1.20 m | 1 1/2 yd<br>1.25 m | 1 1/2 yd<br>1.25 m | 1 1/2 yd<br>1.25 m | 1 3/4 yd<br>1.50 m | 1 3/4 yd<br>1.55 m | 1 3/4 yd<br>1.60 m |                    |
| 147 cm | ROBE (B)*<br>DRESS (B)* | 1 3/4 yd<br>1.50 m | 1 3/4 yd<br>1.50 m | 1 3/4 yd<br>1.50 m | 1 3/4 yd<br>1.50 m | 1 3/4 yd<br>1.50 m | 1 3/4 yd<br>1.55 m | 1 3/4 yd<br>1.55 m | 1 3/4 yd<br>1.55 m | 1 3/4 yd<br>1.55 m | 2 yd<br>1.65 m     | 2 yd<br>1.65 m     | 2 1/4 yd<br>2.05 m | 2 1/2 yd<br>2.15 m | 2 1/2 yd<br>2.20 m | 2 3/4 yd<br>2.30 m | 2 3/4 yd<br>2.30 m |

PIÈCES - PATTERN PIECES



MERCERIE - NOTIONS

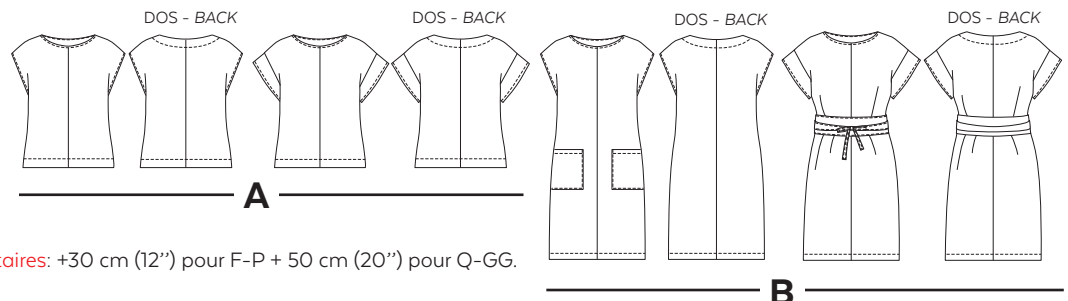
|  |
|--|
| ENTOILAGE THERMOCOLLANT<br>FUSIBLE INTERFACING |
| F - GG   |
| 15 cm (6")                                     |

\*CEINTURE POUR ROBE (FACULTATIVE)

Prévoir du tissu et d'entoilage supplémentaires: +30 cm (12") pour F-P + 50 cm (20") pour Q-GG.

\*BELT FOR DRESS (OPTIONAL)

You will need an extra fabric and interfacing: + 30 cm (12") for F-P, + 50 cm (20") for Q-GG



PRÊT À COUDRE // READY TO SEW  
ressources de couture (1 cm / 3/8") incluses dans le patron  
1 cm / 3/8" seam allowances included in the pattern



1704019



© 2020 LES PATRONS JALIE INC.  
www.jalie.com  
IMPRIMÉ AU CANADA / PRINTED IN CANADA