

4015

HAUT RÉVERSIBLE - REVERSIBLE TOP

ELLE

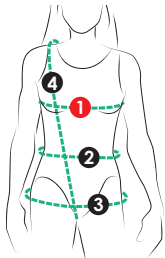
Haut dolman ample avec twist que vous pouvez porter au dos ou au devant!
 MODÈLE A: Sans manches (épaule allongée) MODÈLE B: avec manche 3/4 ample.

28


tailles - sizes

Loose-fitting dolman top with twist detail that you can wear in the front or in the back!
 VIEW A: Sleeveless (extended shoulder) VIEW B: generous 3/4 sleeve.

MESURES DU CORPS (FILLES) - BODY MEASUREMENTS (GIRLS)

Âge approximatif - Approximate age	2	3	4	5	6	7	8	9	10	11	12	13	
Tailles européennes - European sizes	92	98	104	112	119	127	135	142	146	150	152	155	
TAILLE JALIE - JALIE SIZES	F	G	H	I	J	K	L	M	N	O	P	Q	
	1 TOUR DE POITRINE FULL BUST	21"	22"	23"	24"	25"	26"	27"	28"	29"	30"	31"	32"
	2 TOUR DE TAILLE NATURAL WAIST	20"	20 1/2"	21"	21 1/2"	22"	22 1/2"	23"	23 3/4"	24 1/2"	25 1/4"	25 3/4"	26 1/2"
	3 TOUR DES HANCHES FULL HIPS	22"	23"	24"	25"	26"	27"	28"	29 1/2"	30 1/2"	32"	33"	34 1/2"
	4 TRONC (DEVANT+DOS) TORSO (FRONT+BACK)	35"	37"	39"	41"	43"	45"	47"	48 3/4"	50 1/2"	52"	53 3/4"	55 1/2"

TISSU REQUIS - YARDAGE

 58" 147 cm	HAUT MODÈLE A (SANS MANCHES) VIEW A TOP (SLEEVELESS)	3/4 yd	3/4 yd	3/4 yd	3/4 yd	3/4 yd	1 yd	1 yd	1 yd	1 yd	1 yd	1 yd	1 yd	1 yd
	HAUT MODÈLE B (MANCHE 3/4) VIEW B TOP (3/4 SLEEVE)	3/4 yd	3/4 yd	3/4 yd	1 yd	1 yd	1 yd	1 yd	1 1/4 yd	1 1/4 yd	1 1/4 yd	1 1/2 yd	1 3/4 yd	1 3/4 yd

Tricot léger avec peu d'extensibilité.
 Light-weight knit with little stretch.

10% ÉLASTICITÉ MINIMUM REQUISE dans la largeur
 MINIMUM STRETCH REQUIRED in the width

VOTRE TISSU DEVRAIT S'ÉTIRER
 YOUR FABRIC SHOULD STRETCH

JUSQU'ICI
 TO HERE

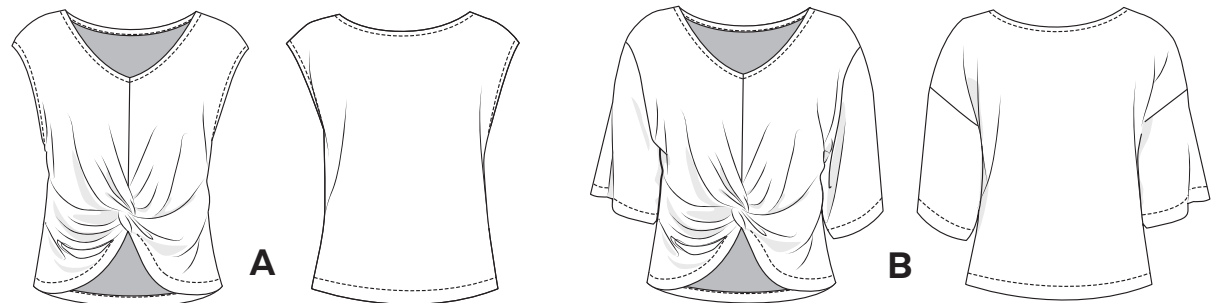
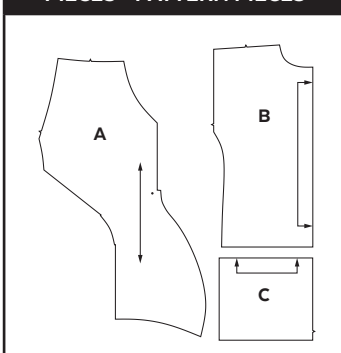
MESURES DU CORPS (FEMMES) - BODY MEASUREMENTS (WOMEN)

Taille US APPROX. US size	2	4	6	8	10	12	14	16	18	20	22	24				
Prêt-à-porter APPROX. RTW size	XS	S			M		L		XL		2XL					
Tailles euro - European sizes	34	36	38	40	42	44	46	48	50	52	54	56				
TAILLE JALIE - JALIE SIZES	R	S	T	U	V	W	X	Y	Z	AA	BB	CC	DD	EE	FF	GG
1 TOUR DE POITRINE FULL BUST	33"	34"	35"	36"	37"	38"	39"	40"	41 1/2"	42 3/4"	44"	45 1/2"	46 3/4"	48 1/4"	49 1/2"	51"
	84 cm	86 cm	89 cm	91 cm	94 cm	96 cm	99 cm	102 cm	106 cm	109 cm	112 cm	116 cm	119 cm	123 cm	126 cm	130 cm
2 TOUR DE TAILLE NATURAL WAIST	27"	28"	29"	30"	31"	32"	33"	34"	35 1/4"	36 1/2"	37 3/4"	39"	40 1/4"	41 1/2"	42 3/4"	44"
	69 cm	71 cm	74 cm	76 cm	78 cm	81 cm	84 cm	86 cm	89 cm	93 cm	96 cm	99 cm	102 cm	105 cm	109 cm	112 cm
3 TOUR DES HANCHES FULL HIPS	36"	37"	38"	39"	40"	41"	42"	43"	44 1/2"	45 3/4"	47"	48 1/2"	49 3/4"	51 1/4"	52 3/4"	54"
	91 cm	94 cm	96 cm	99 cm	102 cm	104 cm	106 cm	109 cm	113 cm	116 cm	120 cm	123 cm	126 cm	130 cm	134 cm	137 cm
4 TRONC (DEVANT+DOS) TORSO (FRONT+BACK)	57 1/4"	59"	59 1/2"	60"	60 1/2"	61"	61 1/2"	62 1/2"	63 1/2"	64"	65"	65 3/4"	66 1/2"	67 1/4"	68 1/4"	69"
	145 cm	150 cm	152 cm	153 cm	154 cm	155 cm	156 cm	159 cm	161 cm	163 cm	165 cm	167 cm	169 cm	171 cm	173 cm	175 cm

TISSU REQUIS - YARDAGE

HAUT MODÈLE A (SANS MANCHES) VIEW A TOP (SLEEVELESS)	1 1/4 yd	1 1/4 yd	1 1/4 yd	1 1/4 yd	1 1/2 yd	1 1/2 yd	1 1/2 yd	1 1/2 yd	1 1/2 yd	1 1/2 yd	1 1/2 yd	1 1/2 yd	1 1/2 yd	1 1/2 yd	1 3/4 yd	1 3/4 yd
HAUT MODÈLE B (MANCHE 3/4) VIEW B TOP (3/4 SLEEVE)	1 3/4 yd	1 3/4 yd	1 3/4 yd	1 3/4 yd	1 3/4 yd	1 3/4 yd	1 3/4 yd	1 3/4 yd	2 yd	2 yd	2 yd	2 yd	2 yd	2 yd	2 yd	2 yd

PIÈCES - PATTERN PIECES



PRÊT À COUDRE // READY TO SEW
 ressources de couture (6 mm / 1/4") incluses dans le patron
 6 mm / 1/4" seam allowances included in the pattern



1504015

Jalie
 PATRONS DE COUTURE
 SEWING PATTERNS

© 2020 LES PATRONS JALIE INC.
 www.jalie.com
 FAIT AU CANADA / MADE IN CANADA