

# FOLKWEAR®

\$19.95 WOMEN'S SIZES EXTRA SMALL TO 2X LARGE

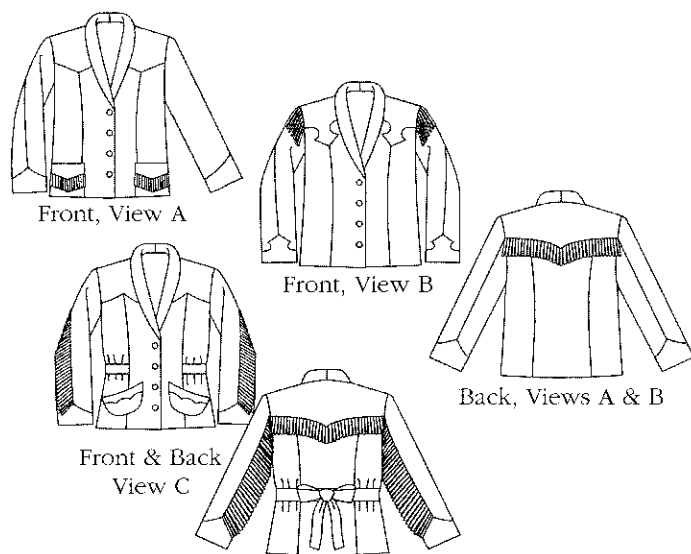
PATTERN FOR JACKET WITH SEVERAL YOKE AND POCKET VARIATIONS, AND OPTIONAL BELT  
SEWING INSTRUCTIONS • A SALUTE TO RODEO COWGIRLS

## 242 — RODEO COWGIRL JACKET

In the early 20th century, adventurous young women blazed a trail from the straight-laced cities of the east to the Wild West, where they learned how to rope, ride, and buck in the popular traveling rodeo shows. Without any available manufactured costumes, cowgirls like Prairie Rose Henderson and Texas Lil crafted their own outfits that attracted attention in the rodeo ring and reflected the personalities of the feisty women who roughed it right along with the men.

This versatile unlined Jacket, adapted from vintage cowgirl costumes, features princess seams, shawl collar, and set-in sleeves. There are three different shoulder yoke variations, and two different cuff yoke and pocket shape variations, as well as an optional belt. Make it in denim, suede, leather, velvet, or silk. Then add an array of embellishments, from fringe and studs to embroidery and lace, to create an entire wardrobe of Western-style jackets for your own multi-faceted personality.

### Front & Back Views



### SUGGESTED FABRICS

Denim, cotton, suede, leather, velvet, medium to heavyweight silk. **NOTE:** Shoulder yokes, cuff yokes, pockets, and belt are perfect for using complementary and/or contrasting fabrics. Insert purchased or custom fringe (instructions included) in any seam you desire or topstitch to finished seams or hem.

### NOTIONS

Thread; ½" (13mm) shoulder pads for set-in sleeves (optional); four ⅞" (2.2cm) buttons; 1⅓ yds (1.3m) interfacing for all sizes.

### SIZING AND YARDAGE REQUIREMENTS

	XSM	SM	MED	LG	XL	2XL	
Bust	30½-31½ 78-80	32½-34 83-87	36-38 92-97	40-42 102-107	44-46 112-117	48-50 122-127	in. cm
Waist	23-24 58-61	25-26½ 64-67	28-30 72-77	32-34 82-87	37-39 94-99	42-44 102-107	in. cm
Hip	32½-33½ 83-86	34½-36 88-92	38-40 97-102	42-44 107-112	46-48 117-122	50-52 127-132	in. cm
Back Waist Length	15½-15¾ 39.5-40	16-16¼ 40.5-41.5	16½-16¾ 42-42.5	17-17¼ 43-44	17½-17¾ 44.5-45	18-18¼ 46-46.5	in. cm

#### View A — Jacket

Fabric Width	XSM	SM	MED	LG	XL	2XL	
45"/115cm	2½		3½		3½		yd
	2.6		3.2		3.3		m
60"/150cm	2		2½		2½		yd
	1.8		2.2		2.3		m

#### View B — Jacket

45"/115cm	2½	3½	3½	3½	3½	yd
	2.4	2.9	3	3.1	3.2	m
60"/150cm	1¾	2½	2½	2½	2½	yd
	1.7	2	2.1	2.2	2.3	m

#### View C — Jacket

45"/115cm	3	3½	3½	3½	3½	yd
	2.8	3.2	3.3	3.5	3.6	m
60"/150cm	2½		2½		2½	yd
	2		2.4		2.5	m

#### View A — Contrast Cuffs, Yokes, Pockets

45"/115cm	¼	yd
	.7	m

#### View B — Contrast Cuffs, Yokes

45"/115cm	½	yd
	.5	m

#### View C — Contrast Cuffs, Yokes, Pockets, Belt

45"/115cm	1¾	yd
	1.3	m

**NOTE:** The yardages given for contrast cuffs, yokes, and pockets are the maximum amount needed. Actual amounts needed may vary, depending on how you position these pattern pieces on your selected fabric. Placement on either the bias or straight grain gives you creative leeway to achieve the desired effect.

#### Finished lengths from neckline at center back to finished hemline:

Extra Small: 23¾" (60.5cm)  
Small: 24¼" (61.5cm)  
Medium: 24¾" (63cm)  
Large: 25¼" (64cm)  
Extra Large: 25¾" (65.5cm)  
2X Large: 26¼" (66.5cm)

FOLKWEAR 242



0 94115 24232 5