

FOLKWEAR®

\$19.95 WOMEN'S EXTRA SMALL TO EXTRA LARGE
MEN'S MEDIUM TO 2X LARGE

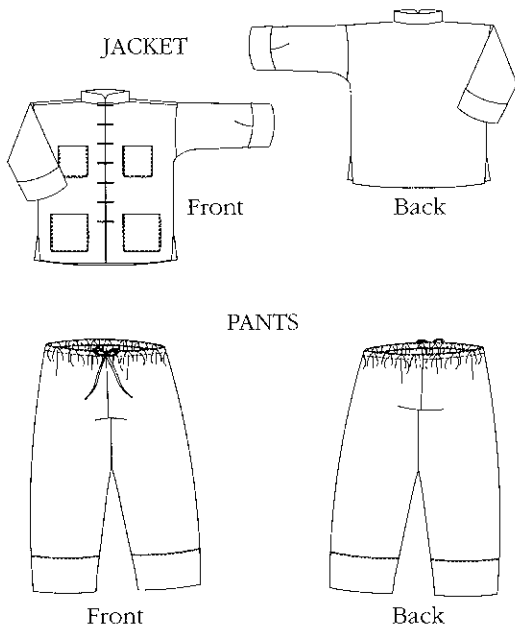
PATTERN FOR JACKET AND PANTS • SEWING INSTRUCTIONS

145 — CHINESE PAJAMAS

The casual comfort and simple elegance of this easy-sew Jacket and Pants combo will make it your favorite at-home wear in super-soft cotton or the perfect evening outfit in silk and brocade. The fully-lined mid-thigh **Jacket** features stand-up Mandarin collar, set-in sleeves, inside and outside pockets, button-loop frog front closures, and extra-long sleeves that roll back to expose a colorful or decorative lining. The loose-fitting **Pants** have a drawstring waist and cuff bands that can be made of the same fabric or a complementary decorative fabric.

Create a wardrobe of interesting outfits by using a changing selection of materials and colors. Other design options include shortening the jacket sleeves or omitting them altogether to make a vest, lengthening the jacket to a knee- or ankle-length coat, or shortening it for a bolero variation.

Front & Back Views



SUGGESTED FABRICS

Soft and fluid silks, synthetics, cottons, silk velvet. For a more structured look, cotton, lightweight denim or corduroy, medium-weight silk, lightweight wool. **NOTE:** Jacket lining shows when cuff is rolled back.

NOTIONS

Thread; 1 yd (.95m) rattail or other cord for frog closures; seven 3/8" (1cm) ball buttons.

SIZING AND YARDAGE REQUIREMENTS

WOMEN'S SIZES	XSmall	Small	Medium	Large	XLarge	
Bust	30½-31½ 78-80	32½-34 83-87	36-38 92-97	40-42 102-107	44-46 112-117	in. cm
Waist	23-24 58-61	25-26½ 64-67	28-30 72-77	32-34 82-87	37-39 94-99	in. cm
Hip	32½-33½ 83-86	34½-36 88-92	38-40 97-102	42-44 107-112	46-48 117-122	in. cm
Back Waist Length	15½-15¾ 39.5-40	16-16¾ 40.5-41.5	16½-16¾ 42-42.5	17-17¼ 43-44	17½-17¾ 44.5-45	in. cm

MEN'S SIZES	Medium	Large	XLarge	2XLarge	
Chest	38-40 97-102	42-44 107-112	46-48 117-122	50-52 127-132	in. cm
Waist	32-34 82-87	36-38 92-97	40-43 101-109	45-48 114-122	in. cm
Hip	39-41 99-104	43-45 109-115	47-49 119-125	51-53 130-135	in. cm
Back Waist Length	19 48.5	19½ 49.5	20 51	20½ 52	in. cm

Jacket

Fabric Width	WXS	WSM	WMD	WLG/ MMD	WXL/ MLG	MXL	M2XL	
45"/115cm	3¾			3¾	3¾			yd
	2.8			3.3	3.4			m
60"/150cm	2¾				2¾			yd
	2.2				2.6			m

Jacket Lining

45"/115cm	2¾		3½		yd
	2.5		3.2		m
60"/150cm	1¾		2½	2¾	yd
	1.7		2.3	2.4	m

Pants with Cuff

45"/115cm	3¾		3¾	3½	yd
	3		3.1	3.2	m
60"/150cm	3¾		3¾	3½	yd
	3		3.1	3.2	m

Pants

45"/115cm	2¾		2¾	3	yd
	2.5		2.6	2.7	m
60"/150cm	2¾		2¾	3	yd
	2.5		2.6	2.7	m

Cuff/Contrast

45"/115cm	¾		yd
	0.7		m
60"/150cm	¾		yd
	0.7		m

Interfacing

25"/65cm	¼		yd
	0.3		m

FOLKWEAR 145

