

FOLKWEAR®

\$16.95 MISSES EXTRA SMALL THROUGH 2X LARGE
PATTERN FOR KIMONO-STYLE OVERCOAT • SEWING INSTRUCTIONS

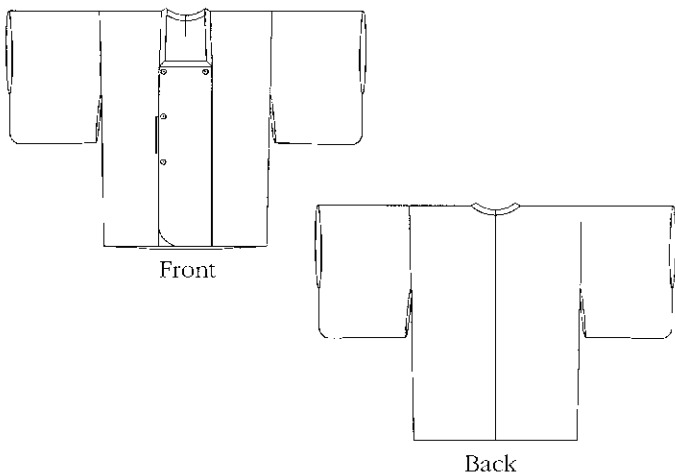
143 — JAPANESE MICHİYUKI

This three-quarter length kimono-style jacket originated in the 20th century as an over-kimono coat that was worn for extra warmth and/or protection while out and about. Its low, square neckline was designed to attractively frame the overlapping neckbands of the kimono and under-kimono worn underneath. Today, the **Michiyuki** is also worn as a dressy overcoat, casual coat-dress, and artist's or work smock, perfect for studio or garden tasks. Lengthened and made out of water-repellent fabric, it also functions as a raincoat.

The pattern features a double-breasted front opening, kimono-style sleeves that are large enough to fit over a kimono underneath, narrow neck band with mitered corners, and a handy pocket hidden in the front seam. Covered buttons are decorative only; snap fasteners attach the overlapping center front panels, so no buttonholes are needed.

Folkwear thanks Merianne Epstein for the original garment from which this pattern was drafted, and Terri Todd for details about wearing this versatile garment.

Front and Back Views



SIZING AND YARDAGE REQUIREMENTS

	XS	SM	MED	LG	XL	2XL	
Bust	30½-31½	32½-34	36-38	40-42	44-46	48-50	in.
	78-80	83-87	92-97	102-107	112-117	122-127	cm
Waist	23-24	25-26½	28-30	32-34	37-39	42-44	in.
	58-61	64-67	72-77	82-87	92-97	102-107	cm
Hip	32½-33½	34½-36	38-40	42-44	46-48	50-52	in.
	83-86	89-94	97-102	107-112	117-122	127-132	cm
Bk Waist Length	15½-15¾	16-16¼	16½-16¾	17-17¼	17½-17¾	18-18¼	in.
	39.5-40	40.5-41.5	42-42.5	43-44	44.5-45	46-46.5	cm

Fabric Width	XS	SM	MED	LG	XL	2XL	
45"/115cm	3	3	3½	3½	3¾	3¾	yds
w/ or w/o nap	2.6	2.6	3.3	3.3	3.4	3.4	m
60"/150cm	2¾	2¾	2¾	2½	2½	2½	yds
w/ or w/o nap	2.1	2.1	2.1	2.3	2.3	2.3	m

Lining

45"/115cm	2¾	2¾	3¾	3¾	3¾	3¾	yds
w/ or w/o nap	2.5	2.5	3.3	3.3	3.4	3.4	m
60"/150cm	2½	2½	2½	2½	2½	2½	yds
w/ or w/o nap	1.9	1.9	1.9	2.3	2.3	2.3	m

Finished Lengths

From center back at base of neck band to hemline:

Extra Small: 32½" (82.5cm)

Small: 33" (84cm)

Medium: 33½" (85cm)

Large: 34" (86.5cm)

Extra Large: 34½" (87.5cm)

2X Large: 35" (89cm)

NOTIONS

Thread; five ¼" (6mm) or ⅜" (10mm) snap fasteners; four ⅝" (16mm) decorative buttons or kits for making covered buttons from the selected Michiyuki fabric.

SUGGESTED FABRICS

Drapey fabrics with body, such as rayon or silk crepe for the outer Michiyuki; lightweight silk or cotton for the lining.

NOTE: The Michiyuki is typically made from unpatterned fabrics with a woven-in design or texture, such as brocade. This is so the garment does not clash with the more elaborate designs of the underlying kimono. However, some Michiyuki fabrics have all-over designs like small checks or narrow stripes. Satin gives a more formal, dressy look. Microfibers and treated fabrics are good for a raincoat.

FOLKWEAR 143

