

# Anaïs

## Stofkeuze / Recommended Fabric / Tissu Conseillé / Empfohlener Stoff

Jurkje/bloesje: katoen, linnen, chambrai. Trui/tunieke: fijne sweaterstof, vaste tricot, french terry  
 Dress/blouse: cotton, linen, chambrai. Sweater/tunic: sweater, jersey, french terry  
 Robe/Blouse: coton, lin, chambrai. Pull-over: tissu sweater, tricoté  
 Kleid/Bluse: Baumwolle, Leinen, Chambrai. Sweatshirt: feine Sweater, tricot

## Benodigdheden / Fournituren / Accessoires / Zubehör

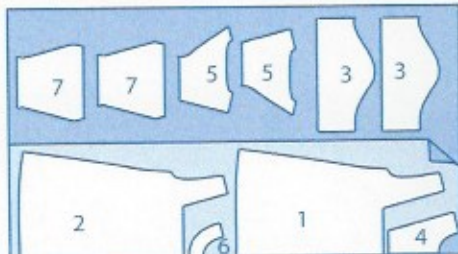
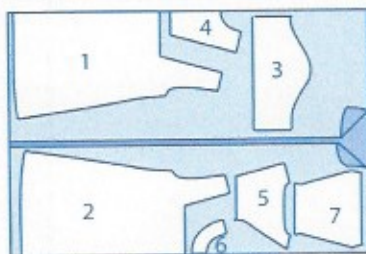
Maten / taille / Gröse / Size (jaren/ans/years)	2	4	6	8	10	12
Jurk / Dress / Robe / Kleid (cm)						
Stof 110 cm	135	145	155	165	175	185
Stof 140 cm	105	115	125	130	135	140
Bloesje & Tuniek & Trui / Blouse & Tunic & Sweater / Pull-over/ Bluse & Tunique & Sweatshirt						
Stof 110 cm	105	115	125	140	150	160
Stof 140 cm	75	85	90	105	110	120

## Knopen / Buttons / Boutons / Knöpfen

2 (15 mm)

Lange mouw / Manches longues / Long sleeves / Langen Ärmel: +30 cm

## Knipplan / Cutting plan / Plan de Coupe / Schneidenplan



Maattabel  
 Tableau de mesures  
 Grössentabelle  
 Size chart  
 (cm)

Leeftijd Age Alter Age	Schouder Épaule Schulter Shoulder	Buste lengte Corsage Vordere Länge Corsage	Lenden Taille Taille Waist	Heup Tour hanche Hip	Totale grootte Stature Gesamtlänge Total Length
2	26	23	54	62	92
4	28	26	56	64	106
6	30	29	58	68	118
8	32	30	60	72	130
10	34	32	62	76	142