

# B6748

11 PIECES

Easy  
Facile

## MISSES' AND MEN'S TUNIC, CAFTAN, PANTS, HAT AND HEADWRAP

**Fabrics:** Designed for Lightweight Woven Fabrics such as: Broadcloth, Jacquard, Satin. Unsuitable for obvious diagonals.

**Notions:** B: 2 yds. of 5/8"-1" Trim. C: 5 5/8 yds. of 5/8"-1" Trim. D: 3 3/8 yds. of 5/8"-1" Trim. E: 1 3/8 yds. of 3/4" Elastic.

Sizes	S	M	L	XL	XXL	XXXL	
	34-36	38-40	42-44	46-48	50-52	54-56	
<b>Head Sizes</b>	22 1/4	23	23 3/4	24 1/2	—	—	
<b>A</b>	45"/**	3	3 1/8	3 1/8	3 1/4	3 3/8	Yd
	60"/**	2 1/4	2 1/4	2 3/8	2 3/4	3	"
<b>B</b>	45"/**	3	3 1/8	3 1/8	3 1/4	3 3/8	Yd
	60"/**	1 7/8	2 1/2	2 5/8	2 3/4	3	"
<b>C</b>	45"/**	3 1/4	3 3/8	3 3/4	3 3/4	3 7/8	Yd
	60"/**	2 1/4	2 3/8	2 7/8	3	3	"
<b>D</b>	45"/**	4 5/8	4 5/8	4 5/8	4 7/8	5 1/8	Yd
	60"/**	3 1/8	4	4 1/8	4 1/4	4 1/4	"

### Fusible Interfacing A,B,C,D

	18, 20"	5/8	5/8	1	1 1/8	1 1/8	Yd
<b>E</b>	45"/**	2 5/8	2 5/8	2 5/8	2 5/8	3 3/4	Yd
	60"/**	2 1/4	2 1/4	2 3/8	2 5/8	2 5/8	"
<b>F</b>	45, 60"/**	3/8	3/8	3/8	3/8	3/8	Yd

### Fusible Interfacing F- 18, 20"- 1/4 yd.

**G** 45"/\*\* - 1 1/2 yds.  
60"/\*\* - 1 yd.

### FINISHED GARMENT MEASUREMENTS

E Width	18 1/4	19 1/4	20 1/4	21 1/4	22 1/4	23 1/4	In
---------	--------	--------	--------	--------	--------	--------	----

### TUNIQUE, CAFTAN, PANTALON, CHAPEAU ET TURBAN POUR JEUNE FEMME ET HOMME

**Tissus:** Créé pour des tissus de poids léger tels que: Toile, Jacquard, Satin. Grandes diagonales ne conviennent pas.

**Mercerie:** B: 1.9m de Galon de 1.5cm - 3cm. C: 5.2m de Galon de 1.5cm - 3cm. D: 2.9m de Galon de 1.5cm - 3cm.

E: 1.3m d'élastique de 2cm.

Tailles	P	M	G	TG	TTG	TTTG	
	34-36	38-40	42-44	46-48	50-52	54-56	
<b>A</b>	115cm*/**	2.8	2.9	2.9	3.0	3.1	m
	150cm*/**	2.1	2.1	2.2	2.6	2.8	"
<b>B</b>	115cm*/**	2.8	2.9	2.9	3.0	3.1	m
	150cm*/**	1.8	2.3	2.4	2.6	2.8	"
<b>C</b>	115cm*/**	3.0	3.1	3.5	3.5	3.6	m
	150cm*/**	2.1	2.2	2.7	2.7	2.8	"
<b>D</b>	115cm*/**	4.3	4.3	4.3	4.5	4.7	m
	150cm*/**	2.9	3.7	3.8	3.9	3.9	"

### Entoilage Thermocollant A,B,C,D

	46, 51 cm	0.6	0.6	1.0	1.1	1.1	m
<b>E</b>	115cm*/**	2.4	2.4	2.4	2.4	3.1	m
	150cm*/**	2.1	2.1	2.2	2.4	2.4	"
<b>F</b>	115, 150cm*/**	0.4	0.4	0.4	0.4	0.4	m

### Entoilage Thermocollant F- 46, 51cm- 0.3m.

**G** 115cm\*/\*\* - 1.4m.  
150cm\*/\*\* - 1.0m.

### MESURES DU VÊTEMENT FINI

E Largeur	46	49	51	54	56	59	cm
-----------	----	----	----	----	----	----	----

\*with nap \*\*without nap

\*avec sens \*\*sans sens



A,B



C



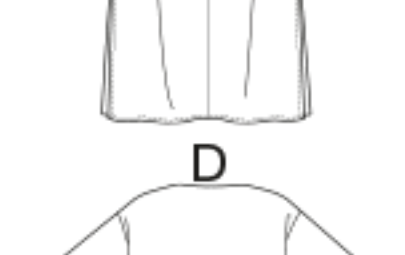
C



D



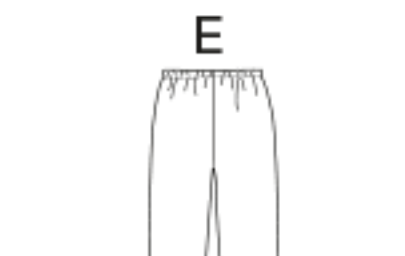
D



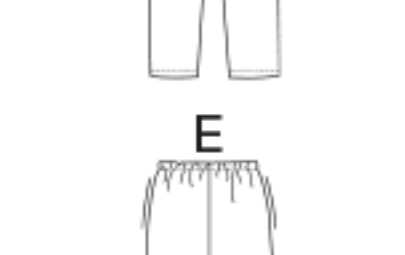
D



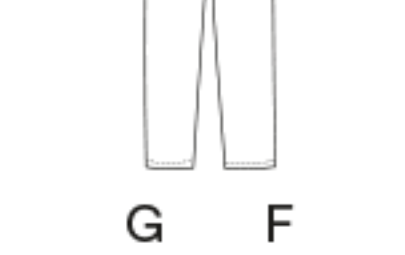
E



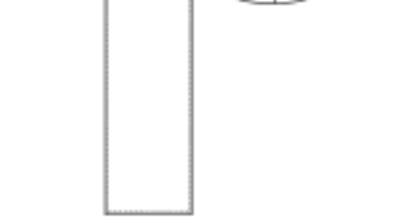
E



E



G



F