

U.S. \$19.95 CAN. \$19.95 ● BLACK M

B6573

MEN'S COSTUME: Lined, double-breasted jackets have two-piece sleeve with gathers, back pleats, and shaped hemline, wrong side of fabric and lining will show. **B, D:** Contrast collar and front facing (lapels).

Combinations: **MWW(38-40-42-44), MQQ(46-48-50-52)**

FABRICS: Wool, Wool Blends, Suiting Fabrics. **Lining:** Cotton, Cotton Blends, Lining Fabric. **Interfacing:** Sew-in Interfacing.

Unsuitable for obvious diagonals.

*With Nap. **Without Nap.

SIZES	38	40	42	44	46	48	50	52
A 45"/**	4 ⁵ / ₈	4 ⁵ / ₈	4 ³ / ₄	4 ⁷ / ₈	5	5 ¹ / ₈	5 ¹ / ₂	5 ¹ / ₂
60"/**	3 ³ / ₄	3 ³ / ₄	3 ³ / ₄	3 ³ / ₄	3 ³ / ₄	3 ³ / ₄	3 ⁷ / ₈	3 ⁷ / ₈
B 45"/**	3 ⁵ / ₈	3 ⁵ / ₈	3 ⁵ / ₈	3 ³ / ₄	3 ³ / ₄	4 ¹ / ₄	4 ³ / ₈	4 ³ / ₈
60"/**	2 ⁷ / ₈	2 ⁷ / ₈	2 ⁷ / ₈	3	3	3	3	3 ¹ / ₈

CONTRAST B - 45", 60"/** - 1⁵/₈ yds.

SEW-IN INTERFACING A, B - 18", 20" - 3 yds.

C 45"/**	4 ³ / ₄	4 ³ / ₄	4 ³ / ₄	4 ⁷ / ₈	4 ⁷ / ₈	5	5	5 ¹ / ₈
60"/**	3 ¹ / ₂	3 ¹ / ₂	3 ⁵ / ₈	3 ⁵ / ₈	4	4	4	4
D 45"/**	3 ¹ / ₂	3 ¹ / ₂	3 ¹ / ₂	3 ¹ / ₂	4 ³ / ₈	4 ³ / ₈	4 ³ / ₈	4 ³ / ₈
60"/**	2 ³ / ₄	2 ³ / ₄	2 ³ / ₄	2 ³ / ₄	3 ¹ / ₈	3 ¹ / ₈	3 ¹ / ₈	3 ¹ / ₈

CONTRAST D - 45", 60"/** - 1⁵/₈ yds.

SEW-IN INTERFACING C, D - 18", 20" - 3³/₈ yds.

LINING A, B, C, D

45"	3 ¹ / ₂	3 ¹ / ₂	3 ¹ / ₂	3 ¹ / ₂	3 ¹ / ₂	3 ⁵ / ₈	3 ³ / ₄	3 ³ / ₄
-----	-------------------------------	-------------------------------	-------------------------------	-------------------------------	-------------------------------	-------------------------------	-------------------------------	-------------------------------

NOTIONS: Eighteen ⁷/₈" Buttons, Four ⁵/₈" Buttons, Shoulder Pads.

FINISHED GARMENT MEASUREMENTS

Back length from base of neck

A, B, C, D	41 ³ / ₄	42	42 ¹ / ₄	42 ¹ / ₂	42 ³ / ₄	43	43 ¹ / ₄	43 ¹ / ₂
------------	--------------------------------	----	--------------------------------	--------------------------------	--------------------------------	----	--------------------------------	--------------------------------

DÉ GUISEMENT (HOMME): Vestes doublées, croisées, à manche en deux parties et froncées, plis dos et ligne d'ourlet en forme, l'envers du tissu et la doublure seront visibles. **B, D:** Col et parementure devant (revers) contrastants.

Séries: **MWW(38-40-42-44), MQQ(46-48-50-52)**

TISSUS: Laine, Lainage, Tissus pour complet. **Doublure:** Cotton, Cotonnade, Tissu à doublure. **Entoilage:** Entoilage à coudre.

Grandes diagonales ne conviennent pas.

*Avec Sens. **Sans Sens.

TAILLES	38	40	42	44	46	48	50	52
A 115cm/**	4.30	4.30	4.40	4.50	4.60	4.70	5.10	5.10
150cm/**	3.50	3.50	3.50	3.50	3.50	3.50	3.60	3.60
B 115cm/**	3.40	3.40	3.40	3.50	3.50	3.90	4.00	4.00
150cm/**	2.70	2.70	2.70	2.80	2.80	2.80	2.80	2.90

CONTRASTE B - 115, 150cm/** - 1.5m

ENTOILAGE À COUDRE A, B - 46, 51cm - 2.8m

C 115cm/**	4.40	4.40	4.40	4.50	4.50	4.60	4.60	4.70
150cm/**	3.20	3.20	3.40	3.40	3.70	3.70	3.70	3.70
D 115cm/**	3.20	3.20	3.20	3.20	4.00	4.00	4.00	4.00
150cm/**	2.60	2.60	2.60	2.60	2.90	2.90	2.90	2.90

CONTRASTE D - 115, 150cm/** - 1.5m

ENTOILAGE À COUDRE C, D - 46, 51cm - 3.1m

DOUBLURE A, B, C, D

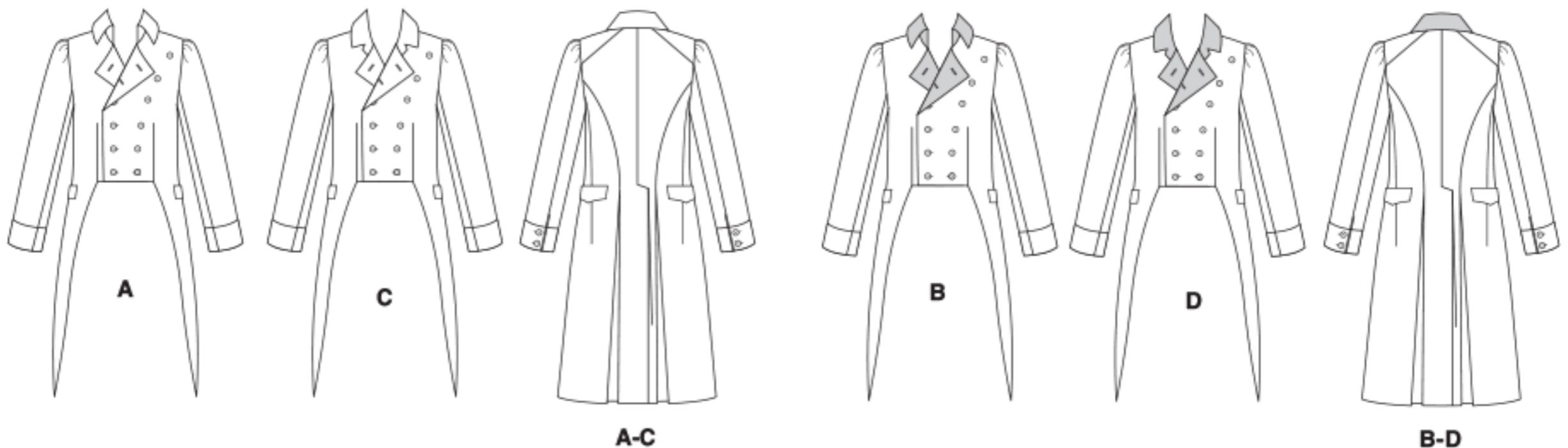
115cm	3.20	3.20	3.20	3.20	3.20	3.40	3.50	3.50
-------	------	------	------	------	------	------	------	------

MERCERIE: 18 Boutons de 22mm, 4 Boutons de 16mm, Épaulettes.

MESURES DU VÊTEMENT FINI

Longueur - dos, votre nuque à l'ourlet

A, B, C, D	106	107	107	108	109	109	110	110
------------	-----	-----	-----	-----	-----	-----	-----	-----



BUTTERICK PATTERN, 120 BROADWAY, NEW YORK 10271 © 2018 The McCall Pattern Company, Inc.

• www.butterick.com • PRINTED IN U.S.A. ALL RIGHTS RESERVED. SOLD FOR INDIVIDUAL HOME USE ONLY AND NOT FOR COMMERCIAL OR MANUFACTURING PURPOSE RESERVE À UN USAGE PERSONNEL.

