

U.S. \$19.95 CAN. \$19.95 ● YELLOW L

B6224 VERY EASY/TRÈS FACILE

WOMEN'S KIMONO AND JUMPSUIT: Very loose-fitting, unlined kimono has mock bands. Loose-fitting jumpsuit has elasticized (seamed) waist, tie end (optional knotted), and side front pockets. **D:** Tapered. All have stitched hems.

Combinations: **RR**(18W-20W-22W-24W), **KK**(26W-28W-30W-32W)

Designed for lightweight woven fabrics.

FABRICS: Challis, Rayon, Linen.

Unsuitable for obvious diagonals.

*With Nap. **Without Nap.

SIZES	18W	20W	22W	24W	26W	28W	30W	32W
A 45"/**	2 ⁵ / ₈	2 ⁵ / ₈	2 ⁵ / ₈	2 ⁵ / ₈	2 ⁵ / ₈	2 ³ / ₄	2 ³ / ₄	3
60"/**	1 ⁷ / ₈	1 ⁷ / ₈	1 ⁷ / ₈	2	2	2	2	2

FUSIBLE INTERFACING A - 18", 20" - 1 yd.

B 45"/**	2 ⁵ / ₈	2 ⁵ / ₈	2 ³ / ₄	3 ¹ / ₈	3 ¹ / ₈	3 ¹ / ₈	3 ¹ / ₄	3 ¹ / ₄
60"/**	2	2	2 ¹ / ₈	2 ¹ / ₈	2 ¹ / ₄	2 ⁵ / ₈	2 ⁵ / ₈	2 ⁵ / ₈

C 45"/**	3 ³ / ₈	3 ³ / ₈	3 ¹ / ₂	3 ⁷ / ₈	3 ⁷ / ₈	3 ⁷ / ₈	3 ⁷ / ₈	3 ⁷ / ₈
60"/**	2 ³ / ₈	2 ¹ / ₂	2 ⁵ / ₈	2 ⁷ / ₈	2 ⁷ / ₈	3 ¹ / ₈	3 ¹ / ₈	3 ¹ / ₄

D 45"/**	3 ⁷ / ₈	3 ⁷ / ₈	3 ⁷ / ₈	4 ³ / ₈	4 ³ / ₈	4 ³ / ₈	4 ³ / ₈	4 ¹ / ₂
60"/**	2 ⁷ / ₈	3	3	3 ¹ / ₄	3 ¹ / ₄	3 ³ / ₈	3 ¹ / ₂	3 ⁵ / ₈

FUSIBLE INTERFACING B, C, D - 18", 20" - 5/8 yd.

NOTIONS: B, C, D: 2 yds. of 3/4" Elastic, One 22" Zipper, Hook and Eye.

FINISHED GARMENT MEASUREMENTS

Width, lower edge

A	50 ¹ / ₂	52 ¹ / ₂	54 ¹ / ₂	56 ¹ / ₂	58 ¹ / ₂	60 ¹ / ₂	62 ¹ / ₂	64 ¹ / ₂
---	--------------------------------	--------------------------------	--------------------------------	--------------------------------	--------------------------------	--------------------------------	--------------------------------	--------------------------------

Width, each leg

B	29 ¹ / ₂	30	30 ¹ / ₂	31	31 ¹ / ₂	32	32 ¹ / ₂	33
C	20	20 ¹ / ₂	21	21 ¹ / ₂	22	22 ¹ / ₂	23	23 ¹ / ₂
D	16 ¹ / ₄	16 ³ / ₄	17 ¹ / ₄	17 ³ / ₄	18 ¹ / ₄	18 ³ / ₄	19 ¹ / ₄	19 ³ / ₄

Back length from base of neck

A	24 ¹ / ₄	24 ¹ / ₂	24 ³ / ₄	25	25 ¹ / ₄	25 ¹ / ₂	25 ³ / ₄	26
---	--------------------------------	--------------------------------	--------------------------------	----	--------------------------------	--------------------------------	--------------------------------	----

Side length from waist

B	19 ¹ / ₄	19 ¹ / ₄	19 ¹ / ₄	19 ¹ / ₄	19 ¹ / ₄	19 ¹ / ₄	19 ¹ / ₄	19 ¹ / ₄
C	33	33	33	33	33	33	33	33
D	42 ¹ / ₄	42 ¹ / ₄	42 ¹ / ₄	42 ¹ / ₄	42 ¹ / ₄	42 ¹ / ₄	42 ¹ / ₄	42 ¹ / ₄

KIMONO ET COMBINAISON (FEMME): Kimono très ample, non doublé, à fausses bandes. Combinaison ample, à taille élastiquée (cousue), attache (nouée facultative) et poches côté devant. **D:** Fuseau. Tous : ourlets piqués.

Séries: **RR**(18W-20W-22W-24W), **KK**(26W-28W-30W-32W)

Créé pour des tissus tissés de poids léger.

TISSUS: Etamine, Rayonne, Toile de lin.

Grandes diagonales ne conviennent pas.

*Avec Sens. **Sans Sens.

TAILLES	18W	20W	22W	24W	26W	28W	30W	32W
A 115cm*/**	2.40	2.40	2.40	2.40	2.40	2.60	2.60	2.80
150cm*/**	1.80	1.80	1.80	1.90	1.90	1.90	1.90	1.90

ENTOILAGE THERMOCOLLANT A - 46, 51cm - 1.00m

B 115cm*/**	2.40	2.40	2.60	2.90	2.90	2.90	3.00	3.00
150cm*/**	1.90	1.90	2.00	2.00	2.10	2.40	2.40	2.40

C 115cm*/**	3.10	3.10	3.20	3.60	3.60	3.60	3.60	3.60
150cm*/**	2.20	2.30	2.40	2.70	2.70	2.90	2.90	3.00

D 115cm*/**	3.60	3.60	3.60	4.00	4.00	4.00	4.00	4.20
150cm*/**	2.70	2.80	2.80	3.00	3.00	3.10	3.20	3.40

ENTOILAGE THERMOCOLLANT B, C, D - 46, 51cm - 0.60m

MERCERIE: B, C, D: 1.90m d'élastique de 2cm, 1 Fermeture à Glissière de 55cm, Agrafe.

MESURES DU VÊTEMENT FINI

Largeur - à l'ourlet

A	128	133	138	143	149	154	159	164
---	-----	-----	-----	-----	-----	-----	-----	-----

Largeur, chaque jambe

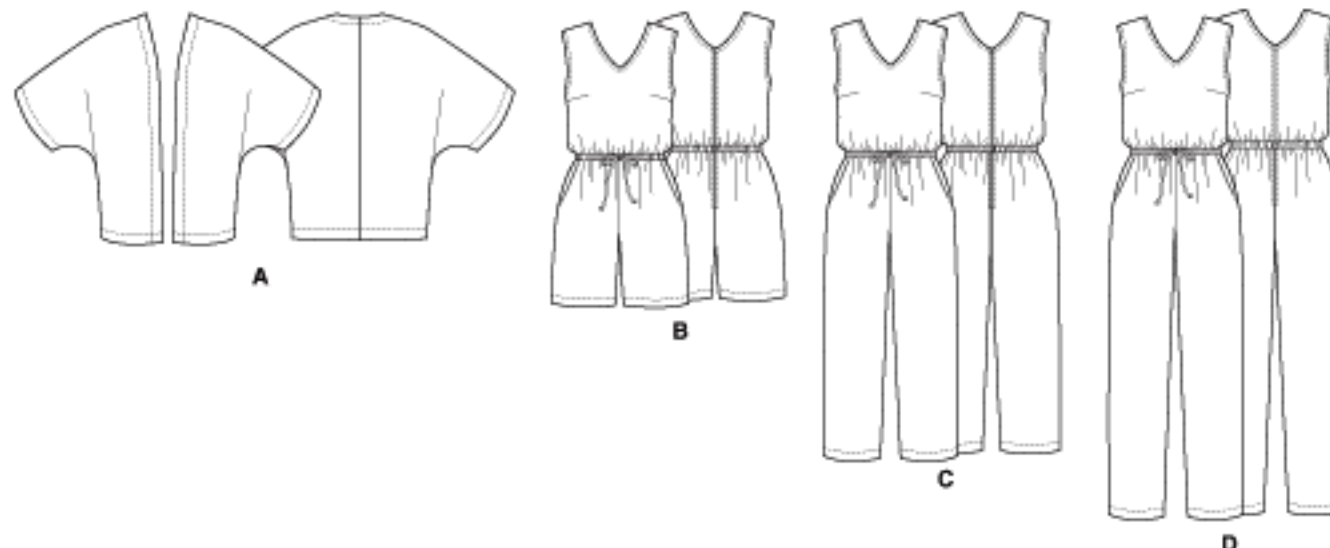
B	75	76	78	79	80	81	83	84
C	51	52	54	55	56	57	59	60
D	41	43	44	45	47	48	49	50

Longueur - dos, votre nuque à l'ourlet

A	62	62	63	64	64	65	66	66
---	----	----	----	----	----	----	----	----

Longueur - côté, taille à l'ourlet

B	49	49	49	49	49	49	49	49
C	84	84	84	84	84	84	84	84
D	107	107	107	107	107	107	107	107



BUTTERICK PATTERN, 120 BROADWAY, NEW YORK 10271 © 2015 The McCall Pattern Co. ● www.butterick.com

● PRINTED IN U.S.A. ALL RIGHTS RESERVED. SOLD FOR INDIVIDUAL HOME USE ONLY AND NOT FOR COMMERCIAL OR MANUFACTURING PURPOSE RESERVE À UN USAGE PERSONNEL.

