

U.S. 18.95 CAN. \$18.95 ● YELLOW L

# B5998

## EASY/FACILE

**MISSES'/WOMEN'S DRESS:** Fitted, underlined, lined dress has seam detail and back zipper.

Combinations: **B5**(8-10-12-14-16), **RR**(18W-20W-22W-24W)

SIZES	Misses'					Women's			
	8	10	12	14	16	18W	20W	22W	24W
<b>A</b> 45"/**	1 1/8	1 1/8	1 1/8	1 1/8	1 1/2	1 1/2	1 7/8	1 7/8	1 7/8
60"/**	1 1/8	1 1/8	1 1/8	1 1/8	1 1/8	1 1/4	1 1/4	1 1/4	1 1/4
<b>CONTRAST A</b>									
45", 60"/**	1	1	1	1	1	1 1/8	1 1/8	1 1/8	1 1/8
<b>UNDERLINING A</b>									
45"/**	2	2	2	2	2	2 1/8	2 1/8	2 1/4	2 1/4
60"/**	1 1/2	1 1/2	1 5/8	1 3/4	1 3/4	1 7/8	1 7/8	1 7/8	1 7/8
<b>LINING A</b>									
45"	2	2	2	2	2	2 1/8	2 1/8	2 1/8	2 1/8
<b>B</b> 45"/**	2 1/8	2 1/8	2 1/8	2 1/8	2 1/8	2 1/2	2 1/2	2 1/2	2 5/8
60"/**	1 1/2	1 1/2	1 5/8	1 5/8	1 5/8	2 1/8	2 1/8	2 1/8	2 1/8
<b>UNDERLINING B</b>									
45"/**	2	2	2	2	2	2 3/8	2 3/8	2 1/2	2 5/8
60"/**	1 1/2	1 1/2	1 1/2	1 5/8	1 3/4	1 3/4	1 7/8	2	2
<b>LINING B</b>									
45"	2	2	2	2	2	2 3/8	2 3/8	2 1/2	2 1/2
<b>C</b> 45"/**	2 1/2	2 1/2	2 1/2	2 1/2	2 1/2	2 7/8	2 7/8	2 7/8	3
60"/**	1 7/8	1 7/8	1 7/8	1 7/8	1 7/8	2 1/4	2 1/4	2 1/4	2 1/4
<b>UNDERLINING C</b>									
45"/**	2 3/8	2 3/8	2 3/8	2 3/8	2 3/8	2 3/4	2 3/4	2 7/8	3
60"/**	1 7/8	1 7/8	1 7/8	1 7/8	1 7/8	1 7/8	2 1/8	2 1/4	2 3/8
<b>LINING C</b>									
45"	2 1/2	2 1/2	2 1/2	2 1/2	2 1/2	2 3/4	2 3/4	2 7/8	2 7/8

Designed for medium weight woven fabrics.

**FABRICS:** Crepe, Linen, Brocade. **Underlining:** Organza.

Unsuitable for obvious diagonals.

\*With Nap. \*\*Without Nap.

**NOTIONS:** One 20" Zipper, Hook and Eye.

### FINISHED GARMENT MEASUREMENTS

Width, lower edge

A, B, C 36 37 38 1/2 40 1/2 42 1/2 44 46 48 50

Back length from base of neck

A, B, C 36 3/4 37 37 1/4 37 1/2 37 3/4 39 39 1/4 39 1/2 39 3/4

**ROBE (J. FEMME/FEMME):** Robe ajustée, avec triplure, doublée, détail de couture et fermeture à glissière au dos.

Séries: **B5**(8-10-12-14-16), **RR**(18W-20W-22W-24W)

TAILLES	J. Femme					Femme			
	8	10	12	14	16	18W	20W	22W	24W
<b>A</b> 115cm*/**	1.10	1.10	1.10	1.10	1.40	1.40	1.80	1.80	1.80
150cm*/**	1.10	1.10	1.10	1.10	1.10	1.20	1.20	1.20	1.20
<b>CONTRASTE A</b>									
115, 150cm*/**	1.00	1.00	1.00	1.00	1.00	1.10	1.10	1.10	1.10
<b>TRIPLURE</b>									
115cm**	1.90	1.90	1.90	1.90	1.90	2.00	2.00	2.10	2.10
150cm**	1.40	1.40	1.50	1.60	1.60	1.80	1.80	1.80	1.80
<b>DOUBLURE A</b>									
115cm	1.90	1.90	1.90	1.90	1.90	2.00	2.00	2.00	2.00
<b>B</b> 115cm*/**	2.00	2.00	2.00	2.00	2.00	2.30	2.30	2.30	2.40
150cm*/**	1.40	1.40	1.50	1.50	1.50	2.00	2.00	2.00	2.00
<b>TRIPLURE B</b>									
115cm**	1.90	1.90	1.90	1.90	1.90	2.20	2.20	2.30	2.40
150cm**	1.40	1.40	1.40	1.50	1.60	1.60	1.80	1.90	1.90
<b>DOUBLURE B</b>									
115cm	1.90	1.90	1.90	1.90	1.90	2.20	2.20	2.30	2.30
<b>C</b> 115cm*/**	2.30	2.30	2.30	2.30	2.30	2.70	2.70	2.70	2.80
150cm*/**	1.80	1.80	1.80	1.80	1.80	2.10	2.10	2.10	2.10
<b>TRIPLURE C</b>									
115cm**	2.20	2.20	2.20	2.20	2.20	2.60	2.60	2.70	2.80
150cm**	1.80	1.80	1.80	1.80	1.80	1.80	2.00	2.10	2.20
<b>DOUBLURE C</b>									
115cm	2.30	2.30	2.30	2.30	2.30	2.60	2.60	2.70	2.70

Créé pour des tissus tissés de poids moyen.

**TISSUS:** Crêpe, Toile de lin, Brocart. **Triplure:** Organza.

Grandes diagonales ne conviennent pas.

\*Avec Sens. \*\*Sans Sens.

**MERCERIE:** 1 Fermeture à Glissière de 51cm, Agrafe.

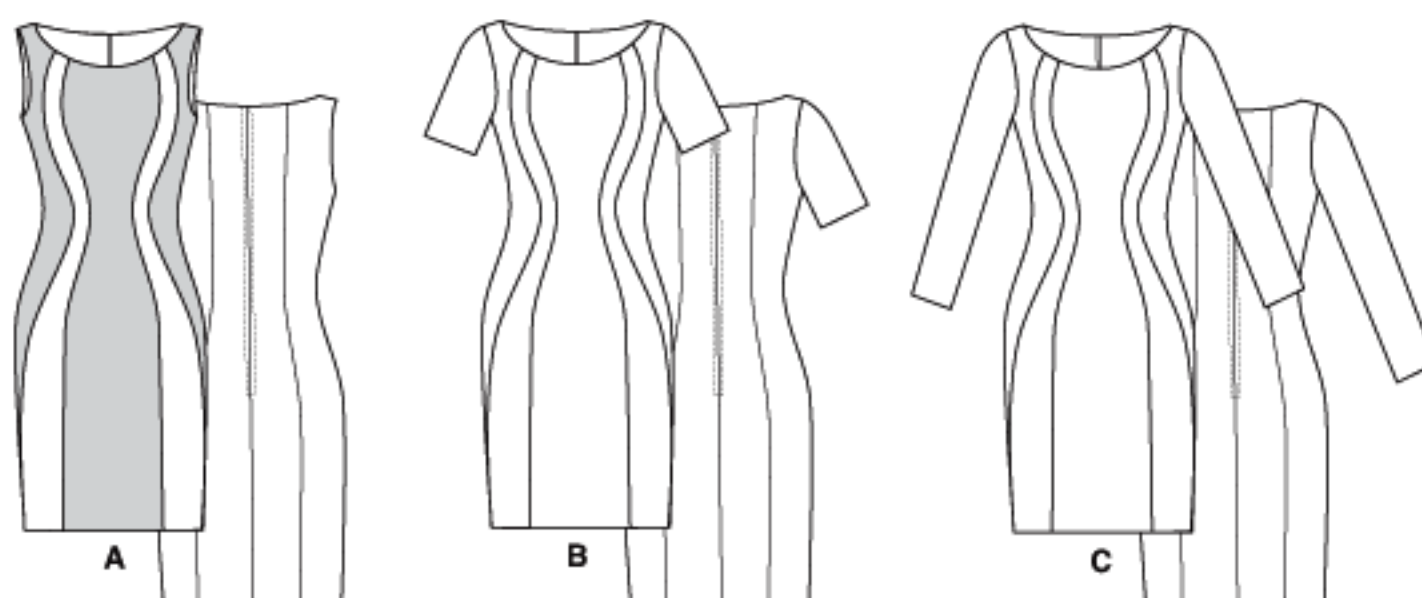
### MESURES DU VÊTEMENT FINI

Largeur à l'ourlet

A, B, C 92 94 98 103 108 112 117 122 127

Longueur - dos votre nuque à l'ourlet

A, B, C 94 94 95 95 96 99 100 100 101



BUTTERICK PATTERN, 120 BROADWAY, NEW YORK 10271 © 2013 The McCall Pattern Co. ● www.butterick.com

● PRINTED IN U.S.A. ALL RIGHTS RESERVED. SOLD FOR INDIVIDUAL HOME USE ONLY AND NOT FOR COMMERCIAL OR MANUFACTURING

PURPOSE RESERVE À UN USAGE PERSONNEL.

