

U.S. \$19.95 CAN. \$19.95 ● BLACK M

B5881

EASY/FACILE

MISSES' DRESS: Loose-fitting, pullover dress has bias neck facing, front-button band, front and back seam openings, partially elasticized back, underdress, stitched hems, shaped hemline and topstitching. **B:** Purchased trim.

Combinations: **B5**(8-10-12-14-16), **F5**(16-18-20-22-24)

SIZES	8	10	12	14	16	18	20	22	24
A 45***	3½	3⅝	3⅝	3⅞	3⅞	4	4½	-	-
60***	2½	2⅝	2¾	2⅞	3¼	3¼	3¼	3⅜	3⅜
B 45***	3⅝	3⅝	3⅝	3⅞	4	4½	4¼	-	-
60***	2⅝	2¾	2¾	2⅞	3⅞	3⅞	3¼	3¼	3⅜
C 45***	1¾	1¾	1⅞	1⅞	2⅞	2⅞	2⅞	2⅞	2½
60***	1¼	1¼	1½	1½	1½	1⅝	1¾	1⅞	1⅞
CONTRAST 1C									
45***	1⅞	1⅞	1⅞	1⅞	1⅞	1⅞	1⅞	1⅞	1⅞
60***	⅞	⅞	⅞	⅞	⅞	⅞	1	1	1
CONTRAST 2C									
45***	⅞	⅞	⅞	1	1	1	1⅞	-	-
60***	¾	¾	¾	¾	¾	¾	¾	¾	¾
CONTRAST 3C									
45***	½	½	½	½	½	½	⅝	⅝	¾
60***	½	½	½	½	½	½	½	½	½

FUSIBLE INTERFACING A, B, C - 18", 20" - ½ yd.

Designed for lightweight woven fabrics.

FABRICS: Linen.

Unsuitable for obvious diagonals.

**Without Nap.

NOTIONS: A, B, C: ½ yd. of ¼" Elastic. **A, B:** Five ⅝" Buttons. **B:** also 2⅞ yds. of 2½" Single-edged Scalloped Lace. **C:** Five ¾" Buttons.

FINISHED GARMENT MEASUREMENTS: Printed on pattern tissue.

ROBE (J. FEMME): Robe ample, à passer par la tête, avec bordure d'encolure en biais, bande devant boutonnée, ouvertures à la couture devant et dos, dos élastiquée en partie, dessous de robe, ourlets piqués, ligne d'ourlet en forme et surpiqûre. **B:** Garniture achetée.

Séries: **B5**(8-10-12-14-16), **F5**(16-18-20-22-24)

TAILLES	8	10	12	14	16	18	20	22	24
A 115cm**	3.20	3.40	3.40	3.60	3.60	3.70	3.80	-	-
150cm**	2.30	2.40	2.60	2.70	3.00	3.00	3.00	3.10	3.10
B 115cm**	3.40	3.40	3.40	3.60	3.70	3.80	3.90	-	-
150cm**	2.40	2.60	2.60	2.70	2.90	2.90	3.00	3.00	3.10
C 115cm**	1.60	1.60	1.80	1.80	2.00	2.00	2.00	2.20	2.30
150cm**	1.20	1.20	1.40	1.40	1.40	1.50	1.60	1.80	1.80
CONTRASTE 1C									
115cm**	1.10	1.10	1.10	1.10	1.10	1.10	1.10	1.10	1.10
150cm**	0.80	0.80	0.80	0.80	0.80	0.80	1.00	1.00	1.00
CONTRASTE 2C									
115cm**	0.80	0.80	0.80	1.00	1.00	1.00	1.10	-	-
150cm**	0.70	0.70	0.70	0.70	0.70	0.70	0.70	0.70	0.70
CONTRASTE 3C									
115cm**	0.50	0.50	0.50	0.50	0.50	0.50	0.60	0.60	0.70
150cm**	0.50	0.50	0.50	0.50	0.50	0.50	0.50	0.50	0.50

ENTOILAGE THERMOCOLLANT A, B, C - 46, 51cm - 0.50m

Créé pour des tissus tissés de poids léger.

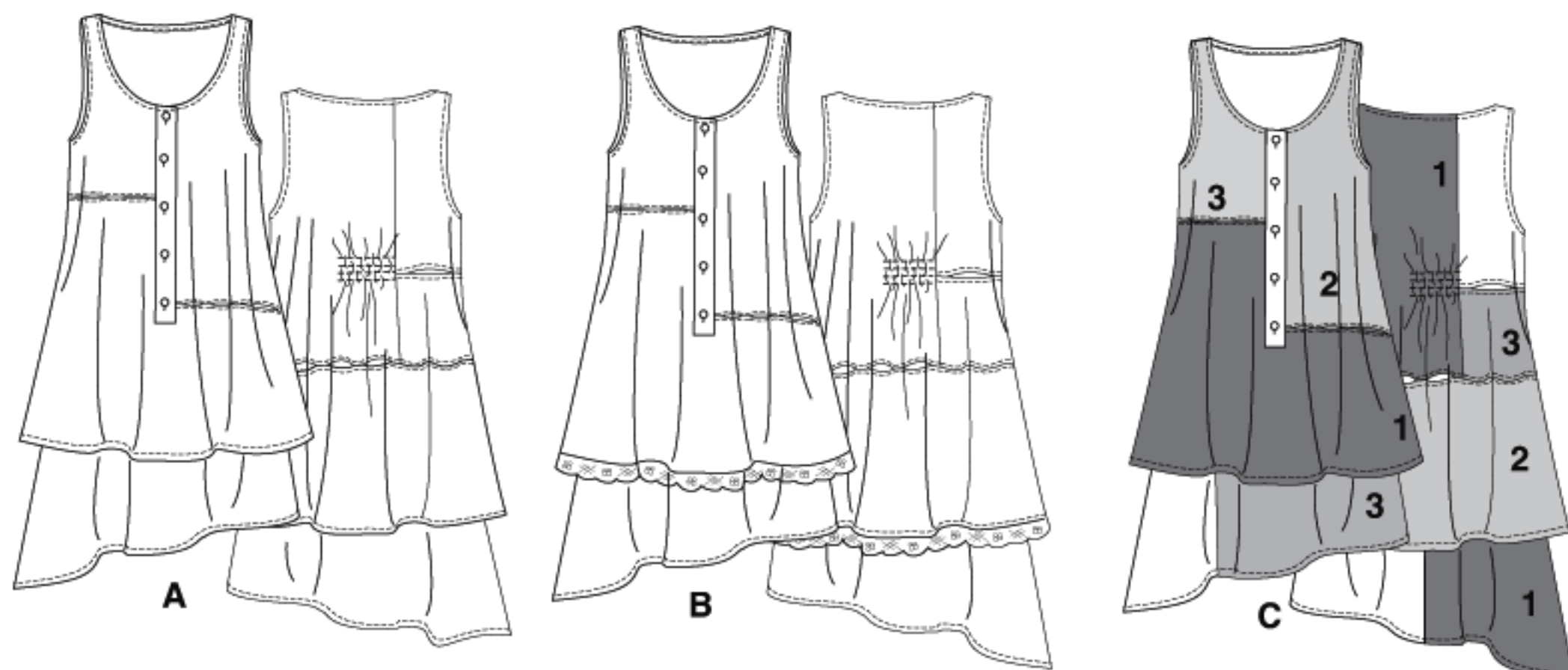
TISSUS: Toile de lin.

Grandes diagonales ne conviennent pas.

**Sans Sens.

MERCERIE: A, B, C: 0.5m d'Élastique de 6mm. **A, B:** 5 Boutons de 16mm. **B:** en plus 2.7m de Dentelle à simple bord festonné de 6.3cm. **C:** 5 Boutons de 19mm.

MESURES DU VÊTEMENT FINI: Imprimées sur le patron.



BUTTERICK PATTERN, 120 BROADWAY, NEW YORK 10271 © 2013 The McCall Pattern Co. ● www.butterick.com

● PRINTED IN U.S.A. ALL RIGHTS RESERVED. SOLD FOR INDIVIDUAL HOME USE ONLY AND NOT FOR COMMERCIAL OR MANUFACTURING

PURPOSE RESERVE À UN USAGE PERSONNEL.

