

U.S. \$18.95 CAN. \$18.95 ● YELLOW L

B5865

18" DOLL CLOTHES: Retro style outfits. **A:** Sleeveless dress. **B:** Dress with rickrack trim. **C:** Long dress with lace trim. **D:** Coat. **E:** Top and pants. **F:** Top and overalls. **NOTE:** Vintage and modern 18" dolls vary in size. Fit pattern to doll.

A - 45", 60"/** - 1/2 yd.

B - 45"/** - 1/2 yd.; 60"/** - 1/4 yd.

CONTRAST B (Net - Underskirt)

54", 72"/** - 3/8 yd.

LINING B, C - 20" x 6" Fabric

C - 45", 60"/** - 3/4 yd.

CONTRAST 1C (Collar) - 45", 60"/** - 1/4 yd.

CONTRAST 2C (Net - Underskirt)

54", 72"/** - 5/8 yd.

D - 45", 60"/** - 3/8 yd.

CONTRAST D (Collar and Lining) - 45", 60"/** - 3/8 yd.

E - 45", 60"/** - 3/8 yd.

CONTRAST E (Collar, Sleevebands, Pants)

45", 60"/** - 3/8 yd.

F (Overalls, Collar, Sleevebands) - 45", 60"/** - 3/8 yd.

CONTRAST F (Top, Facings) - 45", 60"/** - 3/8 yd.

FABRICS: **C, Contrast 1C:** Satin, Sateen. **A, B, D, E, F:** Cotton, Cotton Blends. Also for **D, F:** Twill. **Contrast 2C:** Netting. Unsuitable for obvious diagonals.

*With Nap. **Without Nap.

NOTIONS: **A, B, C:** 1 1/8 yds. of 5/8" Ribbon and 1/8 yd. of 5/8" VELCRO® Fastener Tape. Also for **A:** 3/4 yd. of 1/2" Pre-gathered Lace. Also for **B:** 2 5/8 yds. of 1/2" Rickrack. Also for **C:** 2 3/8 yds. of 1/2" Pre-gathered Lace. **D:** One 1/2" Button and Snap. **E, F:** 1/2" Buttons and Snaps: Three for **E** and Five for **F**, 1/4 yd. of 1/4" Elastic.

VÊTEMENTS POUR POUPEE DE 45cm: Tenues style rétro. **A:** Robe sans manches. **B:** Robe avec garniture de croquet. **C:** Robe longue avec garniture de dentelle. **D:** Manteau. **E:** Haut et pantalon. **F:** Haut et salopette. **N.B.** Les poupées vintage et modernes de 45cm varient en taille. Ajuster le patron pour la poupée.

A - 115, 150cm*/** - 0.50m

B - 115cm*/** - 0.50m; 150cm*/** - 0.30m

CONTRASTE B (Tulle - Dessous de Jupe)

140, 180cm*/** - 0.40m

DOUBLURE B, C - Tissu, 51cm x 15cm

C - 115, 150cm*/** - 0.70m

CONTRASTE 1C (Col) - 115, 150cm*/** - 0.30m

CONTRASTE 2C (Tulle - Dessous de Jupe)

140, 180cm*/** - 0.60m

D - 115, 150cm*/** - 0.40m

CONTRASTE D (Col et Doublure) - 115, 150cm*/** - 0.40m

E - 115, 150cm*/** - 0.40m

CONTRASTE E (Col, Bandes de Manche, Pantalon)

115, 150cm*/** - 0.40m

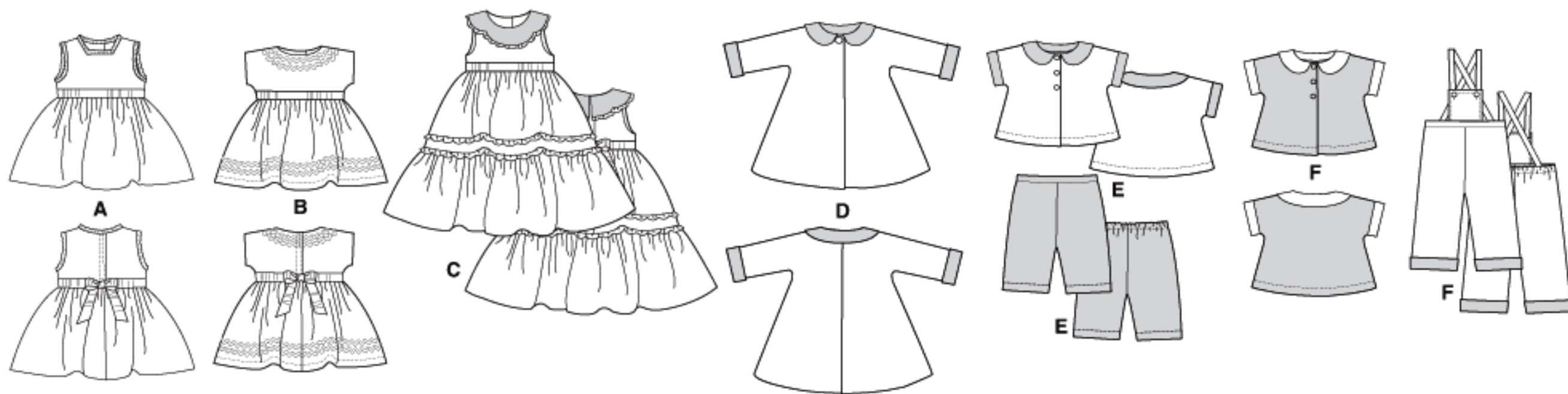
F (Salopette, Col, Bandes de Manche) - 115, 150cm*/** - 0.40m

CONTRASTE F (Haut, Parementures) - 115, 150cm*/** - 0.40m

TISSUS: **C, Contraste 1C:** Satin, Satin de coton. **A, B, D, E, F:** Coton, Cotonnade. Plus pour **D, F:** Twill. **Contraste 2C:** Tulle. Grandes diagonales ne conviennent pas.

*Avec Sens. **Sans Sens.

MERCERIE: **A, B, C:** 1.1m de Ruban de 1.5cm et 0.2m de Bande VELCRO® de 1.5cm. Plus pour **A:** 0.7m de Dentelle préfroncée de 1.3cm. Plus pour **B:** 2.4m de Croquet de 1.3cm. Plus pour **C:** 2.2m de Dentelle préfroncée de 1.3cm. **D:** 1 Bouton et Bouton-pression de 13mm. **E, F:** Boutons et Boutons-pression de 13mm: 3 pour **E** et 5 pour **F**, 0.3m d'Élastique de 6mm.



BUTTERICK PATTERN, 120 BROADWAY, NEW YORK 10271 © 2012 The McCall Pattern Co. ● www.butterick.com

● PRINTED IN U.S.A. ALL RIGHTS RESERVED. SOLD FOR INDIVIDUAL HOME USE ONLY AND NOT FOR COMMERCIAL OR MANUFACTURING PURPOSE RESERVE À UN USAGE PERSONNEL.

