

U.S. \$19.95 CAN. \$19.95 ● BLACK M

PATTERN/PATRON

B5719

EASY/FACILE

MISSES'/WOMEN'S JACKET, DRESS, SKIRT AND PANTS:
 Jacket **A, B**: Loose-fitting. **A**: Purchased trim. Dress **C**: Fitted through hips. **A, B, C**: Lined. Skirt **D** and straight-legged pants **E** (below waist) have waistband. **C, D**: Back zipper. **E**: Front mock fly zipper. **C, D, E**: Semi-fitted. Purchased top. **Misses'**: A/B, C, D and **Women's**: C/D, DD, DDD cup sizes.

Combinations: **B5**(8-10-12-14-16), **RR**(18W-20W-22W-24W)

SIZES	Misses'					Women's			
	8	10	12	14	16	18W	20W	22W	24W
A 45"/**	1¾	1⅞	2	2	2	2¾	2½	2½	2½
60"/**	1¾	1¾	1¾	1½	1½	1⅞	1⅞	1⅞	1⅞
B 45"/**	2⅞	2¼	2¾	2¾	2½	3	3	3	3⅞
60"/**	1⅞	1¾	1¾	1¾	2	2¼	2¼	2¼	2¼
C 45"/**	2¼	2¼	2¼	2¾	2¾	2¾	2¾	2¾	2¾
60"/**	1¼	1¼	1¼	1¼	1¾	1¾	2¼	2¼	2¼
D 45"/**	⅞	⅞	1⅞	1⅞	1⅞	1¼	1¼	1¼	1¼
60"/**	⅞	⅞	⅞	⅞	⅞	⅞	⅞	⅞	⅞
E 45"/**	2½	2½	2½	2½	2½	2½	2½	2½	2½
60"/**	1¾	1¾	1¾	2⅞	2⅞	2¼	2¼	2½	2½

NOTE: See Instruction Sheets for Lining, Interfacing and Notions Information.

Designed for Soft Light to Medium Weight Woven Fabrics.

FABRICS: Lightweight Tweed, Linen, Lightweight Broadcloth, Stretch Wovens. Unsuitable for obvious diagonals.

*With Nap. **Without Nap.

VESTE, ROBE, JUPE ET PANTALON (J. FEMME/FEMME):
 veste **A, B**: Amples. **A**: Galon acheté. Robe **C**: Ajustée aux hanches. **A, B, C**: Doublées. Jupe **D** et pantalon **E**: à Jambe droite **E** (au-dessous de la taille) avec ceinture. **C, D**: Fermeture à glissière au dos. **E**: Fausse braguette devant. **C, D, E**: Semi-ajustés. Haut acheté. **J. Femme**: Tailles de bonnet A/B, C, D et **Femme**: C/D, DD, DDD.

Séries: **B5**(8-10-12-14-16), **RR**(18W-20W-22W-24W)

TAILLES	J. Femme					Femme			
	8	10	12	14	16	18W	20W	22W	24W
A 115cm/**	1.60	1.80	1.90	1.90	1.90	2.20	2.30	2.30	2.30
150cm/**	1.30	1.30	1.30	1.40	1.40	1.80	1.80	1.80	1.80
B 115cm/**	2.00	2.10	2.20	2.20	2.30	2.80	2.80	2.80	2.90
150cm/**	1.50	1.60	1.60	1.60	1.90	2.10	2.10	2.10	2.10
C 115cm/**	2.10	2.10	2.10	2.20	2.20	2.20	2.20	2.20	2.20
150cm/**	1.20	1.20	1.20	1.20	1.30	1.30	2.10	2.10	2.10
D 115cm/**	0.80	0.80	1.50	1.50	1.50	1.60	1.60	1.60	1.60
150cm/**	0.80	0.80	0.80	0.80	0.80	0.80	0.80	0.80	0.80
E 115cm/**	2.30	2.30	2.30	2.30	2.30	2.30	2.30	2.30	2.30
150cm/**	1.30	1.30	1.60	2.00	2.00	2.10	2.10	2.30	2.30

N.B. Se reporter au Feuille d'Instructions pour le renseignement sur la Doublure, l'Entoilage et la Mercerie.

Créé pour des tissus souples de poids léger à moyen.

TISSUS: Tweed fin, Toile de lin, Toile ultra-fine, Textures extensibles. Grandes diagonales ne conviennent pas.

*Avec Sens. **Sans Sens.

Finished Garment Measurements/Mesures du Vêtement Fini

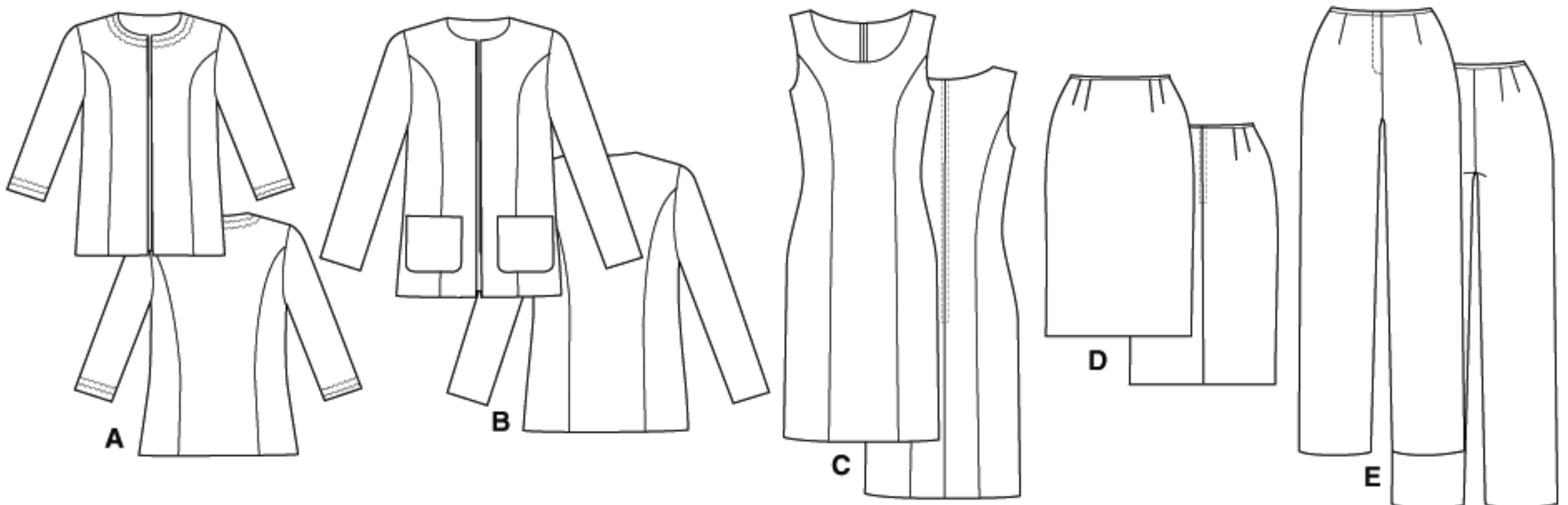
Bust/Poitrine: **C: Misses'/J. Femme: A/B Cup/Bonnet:** 36" - 42½" (92cm - 108cm); **C Cup/Bonnet:** 37" - 43½" (94cm - 110cm); **D Cup/Bonnet:** 38" - 44½" (97cm - 113cm); **Women's/Femme: C/D Cup/Bonnet:** 44½" - 50½" (113cm - 128cm); **DD Cup/Bonnet:** 45½" - 51½" (116cm - 131cm); **DDD Cup/Bonnet:** 46½" - 52½" (118cm - 133cm)

Width/Largeur: **E: Misses'/J. Femme:** 19½" - 21½" (50cm - 55cm); **Women's/Femme:** 20½" - 22" (52cm - 56cm)

Length/Longueur: **A: Misses'/J. Femme:** 23¾" - 24¾" (61cm - 63cm); **Women's/Femme:** 25¾" - 26½" (66cm - 67cm)

B: Misses'/J. Femme: 27¾" - 28¾" (71cm - 73cm); **Women's/Femme:** 29¾" - 30½" (76cm - 78cm)

Note: Remaining measurements included on pattern tissue./**N.B.** Les mesures restantes sont imprimées sur la pièce de patron.



BUTTERICK PATTERN, 120 BROADWAY, NEW YORK 10271 © 2011 The McCall Pattern Co. ● www.butterick.com

● PRINTED IN U.S.A. ALL RIGHTS RESERVED. SOLD FOR INDIVIDUAL HOME USE ONLY AND NOT FOR COMMERCIAL OR MANUFACTURING PURPOSE

RESERVE À UN USAGE PERSONNEL.