

U.S. \$2.99 CAN. \$3.89

● RED H

PATTERN/PATRON

B5666

VERY EASY/TRÈS FACILE

MISSES' CARDIGAN: Very loose-fitting, shawl collar.

Combinations: **A**(XS-S-M-L-XL-XXL)

SIZES	XS	S	M	L	XL	XXL
	4-6	8-10	12-14	16-18	20-22	24-26
A 60"*	1¾	2	2	2½	2½	2¾
B 60"*	2	2	2	2½	2¾	2¾

FABRICS: † Moderate Stretch Knits Only. Sweater Knits, Double Knits, Cotton Knits.

Unsuitable for obvious diagonals.

*With Nap.

CARDIGAN (J. FEMME): Très ample, col châle.

Séries: **A**(TP-P-M-G-TG-TTG)

TAILLES	TP	P	M	G	TG	TTG
	4-6	8-10	12-14	16-18	20-22	24-26
A 150cm*	1.60	1.90	1.90	2.00	2.00	2.20
B 150cm*	1.90	1.90	1.90	2.00	2.60	2.70

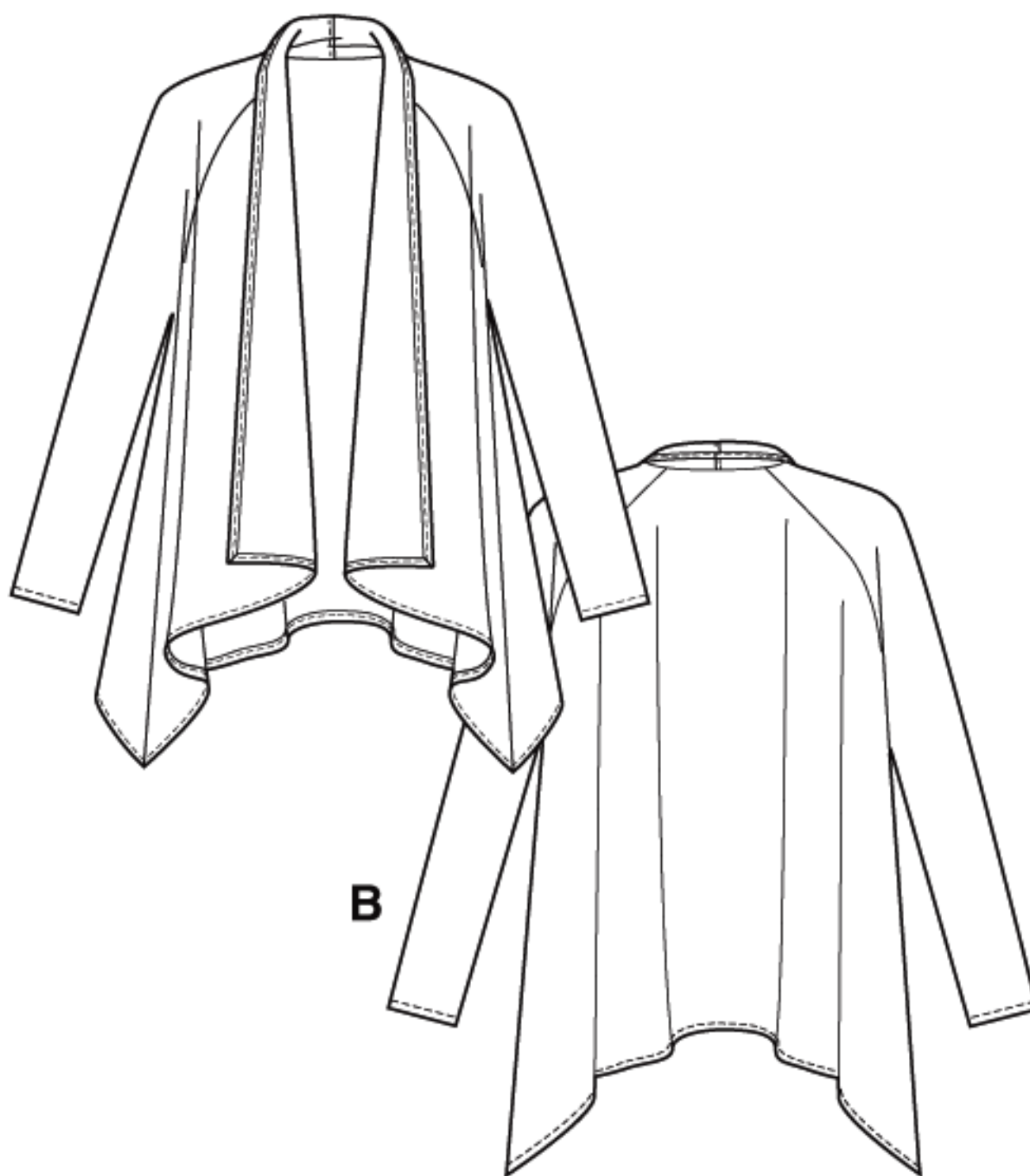
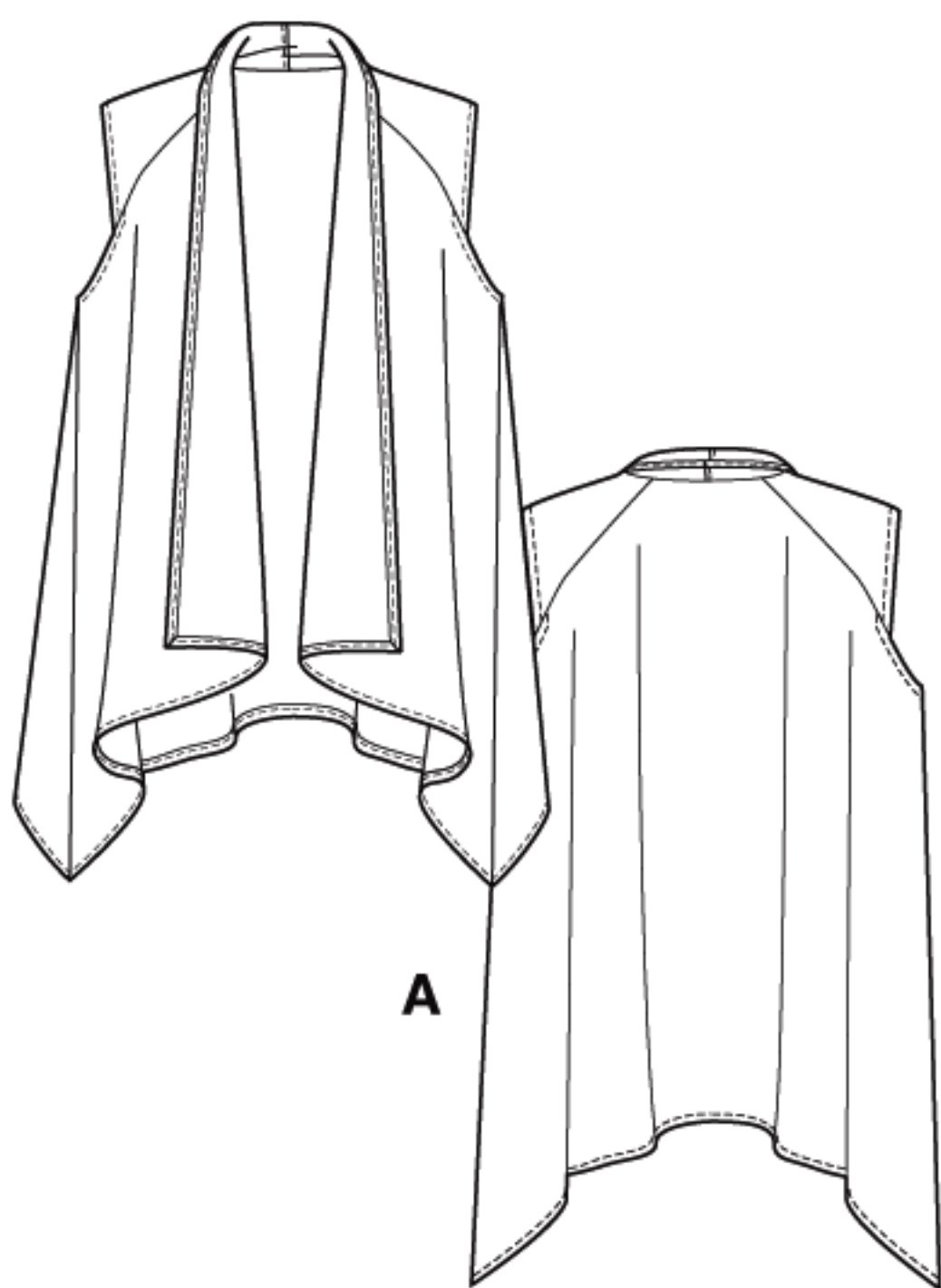
TISSUS: † Uniquement pour maille à élasticité moyenne. Jersey imitant le tricot, Jersey double, Jersey de coton. Grandes diagonales ne conviennent pas.

*Avec Sens.

Finished Garment Measurements/Mesures du Vêtement Fini

Length/Longueur: **A, B:** 26" - 28½" (66cm - 72cm)

Note: Remaining measurements included on pattern tissue./N.B. Les mesures restantes sont imprimées sur la pièce de patron.



to Here / à celle là
 Stretch (Crosswise) 4" (10 cm) of Folded Knit From Here / Étirer 10cm de tricot plié sur la largeur, de cette limite

BUTTERICK PATTERN, 120 BROADWAY, NEW YORK 10271 © 2011 The McCall Pattern Co. ● www.butterick.com

● PRINTED IN U.S.A. ALL RIGHTS RESERVED. SOLD FOR INDIVIDUAL HOME USE ONLY AND NOT FOR COMMERCIAL OR MANUFACTURING PURPOSE

RESERVE À UN USAGE PERSONNEL.