

average

MISSES' COSTUME: Lined, floor length cape has hood, gathered neckline and decorative closure. Floor length dress has close-fitting, lined, drop, shaped bodice, with princess seams, long sleeves, flared skirt with godets and back zipper closing. Purchased trim.

NOTIONS: Cape: One Decorative Hook and Eye Closure, 3/4 yd. of 7/8" Ribbon and Seam Binding. **Dress:** 7" Zipper, 2 3/4 yds. of 1/4" Cord, One 5/8" Buckle, Twenty-two Small Eyelets, 3 yds. of 1/4" Flexible Trim, 4 yds. of 5/8" Flexible Trim and Pearl Beads.

FABRICS: Cape and Dress: Velvet, Velveteen, Crepe and Stable Knits. **Cape Lining:** Satin and Jaquard. **Dress Lining:** Lining Fabrics. Unsuitable for obvious diagonals or uneven plaids. Use nap yardages/layouts for pile, shaded or one-way design fabrics. *with nap. **without nap.

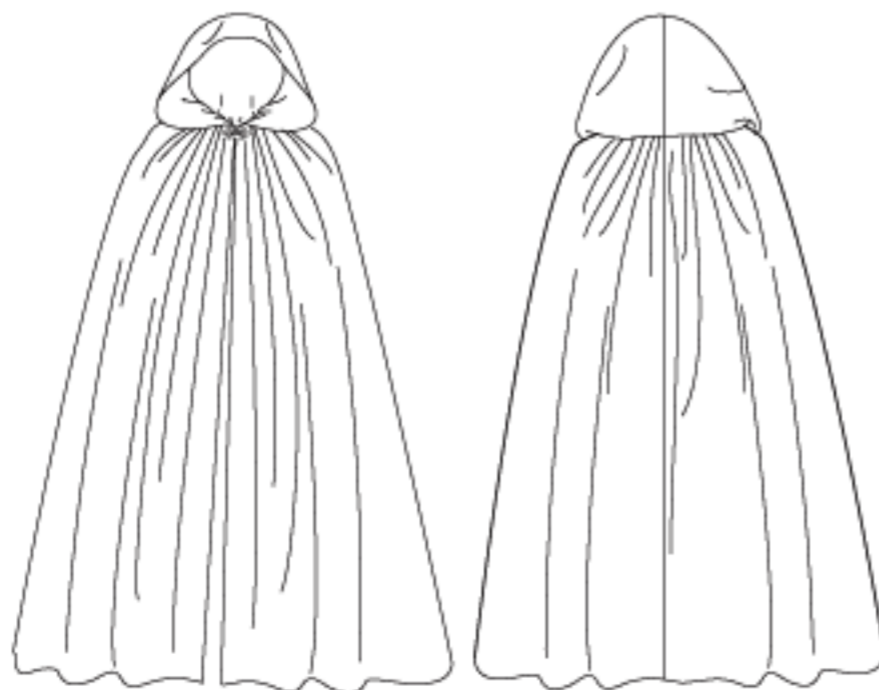
Combinations: AA(6-8-10-12), EE(14-16-18-20)

MULTI-SIZED FOR CUSTOM FIT

SIZES	6	8	10	12	14	16	18	20
CAPE								
45**	7 1/8	7 1/8	7 1/8	7 1/4	7 3/8	7 3/8	7 1/2	7 1/2
45***	6 1/2	6 1/2	6 5/8	6 5/8	6 3/4	6 3/4	6 7/8	6 7/8
60**	6 1/8	6 1/4	6 1/4	6 1/4	6 1/4	6 3/8	6 3/8	6 3/8
60***	4 3/4	4 3/4	4 7/8	4 7/8	4 7/8	5	5 1/8	5 1/8
LINING (Cape)								
45**	7 1/8	7 1/8	7 1/8	7 1/4	7 3/8	7 3/8	7 1/2	7 1/2
45***	6 1/2	6 1/2	6 5/8	6 5/8	6 3/4	6 3/4	6 7/8	6 7/8
60**	6 1/8	6 1/4	6 1/4	6 1/4	6 1/4	6 3/8	6 3/8	6 3/8
60***	4 3/4	4 3/4	4 7/8	4 7/8	4 7/8	5	5 1/8	5 1/8
DRESS								
45**/**	9 1/4	9 1/4	9 3/8	9 3/8	9 3/8	9 1/2	9 1/2	9 5/8
60**	8 3/8	8 3/8	8 3/8	8 3/8	8 3/8	8 3/8	8 3/8	8 3/8
60***	6 1/8	6 1/4	6 1/4	6 1/4	6 3/8	6 3/8	6 1/2	6 5/8
LINING (Bodice and Sleeves)								
45"	1 3/8	1 3/8	1 1/2	1 1/2	1 1/2	1 1/2	1 1/2	1 1/2
FUSIBLE INTERFACING (Band)								
20", 24"	1/4	1/4	1/4	1/4	1/4	1/4	1/4	1/4

Back length from base of your neck

Cape, 60"
Dress, 58"



moins facile

DEGUISEMENT (J. FEMME): Cape doublée, au ras du sol, à capuche, encolure froncée et fermeture décorative. Robe au ras du sol avec corsage ajusté, doublé, avec forme et coutures princesse, manches longues, jupe évasée avec godets et fermeture à glissière au dos. Garniture achetée.

MERCERIE: Cape: 1 Fermeture à Agrafe Décorative, 0.7m de Ruban (2.2cm) et Extra-fort. **Robe:** Glissière (18cm), 3.0m de Cordon (6mm), 1 Boucle (1.5cm), 22 Oeillets petits, 2.8m Garniture flexible (6mm), 3.8m de Garniture flexible (1.5cm) et Perles Rondes.

TISSUS: Cape et Robe: Velours, Velours de Coton, Crêpe et Maille à peu d'élasticité. **Doublure de Cape:** Satin et Jaquard. **Doublure de Robe:** Tissus de doublure. Grandes diagonales ne conviennent pas. Compte non tenu des raccords de rayures/carreaux. *avec sens. **sans sens.

Séries: AA(6-8-10-12), EE(14-16-18-20)

MULTI-TAILLES/A VOS MESURES

TAILLES	6	8	10	12	14	16	18	20
CAPE								
115cm*	6.60	6.60	6.60	6.70	6.80	6.80	6.90	6.90
115cm**	6.00	6.00	6.10	6.10	6.20	6.20	6.30	6.30
150cm*	5.60	5.80	5.80	5.80	5.80	5.90	5.90	5.90
150cm**	4.40	4.40	4.50	4.50	4.50	4.60	4.70	4.70
DOUBLURE (Cape)								
115cm*	6.60	6.60	6.60	6.70	6.80	6.80	6.90	6.90
115cm**	6.00	6.00	6.10	6.10	6.20	6.20	6.30	6.30
150cm*	5.60	5.80	5.80	5.80	5.80	5.90	5.90	5.90
150cm**	4.40	4.40	4.50	4.50	4.50	4.60	4.70	4.70
ROBE								
115cm**/**	8.50	8.50	8.60	8.60	8.60	8.70	8.70	8.80
150cm*	7.70	7.70	7.70	7.70	7.70	7.70	7.70	7.70
150cm**	5.60	5.80	5.80	5.80	5.90	5.90	6.00	6.10
DOUBLURE (Corsage et Manches)								
115cm	1.30	1.30	1.40	1.40	1.40	1.40	1.40	1.40
ENTOILAGE THERMOCOLLANT (Bande)								
51, 61cm	0.30	0.30	0.30	0.30	0.30	0.30	0.30	0.30

Longueur - dos, votre nuque à l'ourlet

Cape, 152cm
Robe, 147cm

