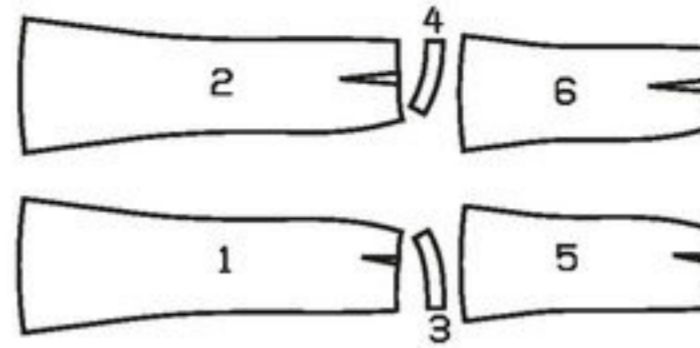


**SKIRT • JUPE • FALDA**

**AB:** fitted, ajusté, ajustado.



		45 ins / 114 cm							55 ins / 140 cm						
Sizes Tailles • Tallas	US Eur.	10 36	12 38	14 40	16 42	18 44	20 46	22+24+26+28 48+50+52+54	10 36	12 38	14 40	16 42	18 44	20 46	22+24+26+28 48+50+52+54
<b>A</b>	yds	2¼	2¼	2½	2½	2½	2½	2½	1½	1½	1⅝	2½	2½	2½	2½
	m	2.00	2.00	2.20	2.20	2.20	2.20	2.20	1.25	1.30	1.40	2.15	2.15	2.15	2.15
		→	→	→	→	→	→	→	*	*	*	*	*	*	*
<b>A Lining • Doublure Forro</b>	yds	2¼	2¼	2¼	2¼	2¼	2¼	2¼	1⅞	1⅞	1½	2¼	2¼	2¼	2¼
	m	2.00	2.00	2.00	2.00	2.00	2.00	2.00	1.00	1.20	1.30	2.00	2.00	2.00	2.00
<b>B</b>	yds	1¾	1¾	1¾	1¾	1¾	1¾	1¾	⅞	⅞	⅞	⅞	⅞	1	1¾
	m	1.55	1.55	1.55	1.55	1.55	1.55	1.55	0.80	0.80	0.80	0.80	0.80	0.90	1.50
		→	→	→	→	→	→	→	*	*	*	*	*	*	*

→ with nap • avec sens • con dirección

\* without nap • sans sens • sin dirección

Tweed,  
crepe fabrics,  
flannel,  
imitation leather

**AB:**

Interfacing • triplure  
entretela  
36" x 10"  
(90 cm x 25 cm)

8" (20 cm)

**A**

36¼" (92 cm)

54" - 71¼"  
(137-181 cm)

**B**

23¾" (60 cm)

46" - 63½"  
(117-161 cm)

Tweed, crêpe,  
flanelle, similicuir

Tweed,  
géneros de crep,  
franela, piel  
sintética