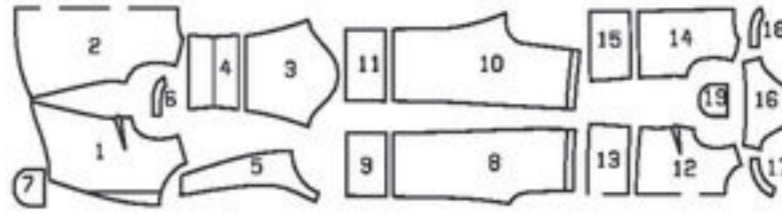


COORDINATES • COORDONNES • COORDINADOS

A: loose fitting, ample, amplio;
BC: semi-fitted,
semi-ajusté, semi-ajustado
Shoulder • Epaule • Hombros:
broad, large, anchos.



		45 ins / 114 cm										55 ins / 140 cm									
Sizes	US	18	20	22	24	26	28	30	32	34	18	20	22	24	26	28	30	32	34		
Tailles • Tallas	Eur.	44	46	48	50	52	54	56	58	60	44	46	48	50	52	54	56	58	60		
A	yds	3 ¹ / ₈	3 ¹ / ₈	3 ¹ / ₈	3 ¹ / ₄	3 ¹ / ₂	3 ⁵ / ₈	3 ⁷ / ₈	4	4	2 ¹ / ₂	2 ¹ / ₂	2 ⁵ / ₈	2 ⁵ / ₈	2 ³ / ₄	2 ⁷ / ₈	3	3 ¹ / ₈	3 ¹ / ₈		
	m	2.75	2.75	2.80	2.85	3.15	3.30	3.50	3.60	3.60	2.20	2.20	2.25	2.30	2.50	2.55	2.70	2.80	2.80		
B	yds	2 ¹ / ₄	2 ¹ / ₄	2 ¹ / ₄	2 ¹ / ₄	2 ¹ / ₂	2 ¹ / ₂	2 ³ / ₄	2 ³ / ₄	2 ³ / ₄	1 ³ / ₄	1 ³ / ₄	1 ³ / ₄	2 ¹ / ₄	2 ¹ / ₄	2 ¹ / ₄	2 ¹ / ₄	2 ¹ / ₄	2 ¹ / ₄		
	m	1.95	1.95	2.00	2.00	2.15	2.15	2.45	2.45	2.45	1.60	1.60	1.60	1.95	1.95	1.95	1.95	2.00	2.00		
C	yds	1 ⁷ / ₈	1 ⁷ / ₈	2	2	2 ¹ / ₄	2 ¹ / ₄	2 ¹ / ₄	2 ¹ / ₂	2 ¹ / ₂	1 ¹ / ₄	1 ¹ / ₄	1 ³ / ₈	1 ³ / ₄	1 ³ / ₄	2 ¹ / ₈	2 ¹ / ₈	2 ¹ / ₈	2 ¹ / ₈		
	m	1.70	1.70	1.75	1.75	2.00	2.00	2.00	2.15	2.15	1.10	1.10	1.20	1.50	1.50	1.85	1.85	1.85	1.85		

→ with nap • avec sens • con dirección

★ without nap • sans sens • sin dirección

Interfacing • triplure
entretela
A: 24" x 34" (60 x 85 cm)
C: 32" x 10" (80 x 25 cm)

AC 1x

C 24" (60 cm)

B 33¹/₂" - 51¹/₄" (85-130 cm) ↑ 1" (2.5 cm)

Linon, lightweight
poplin, crêpe
fabrics

Lin, popeline
légère, crêpe

Lino, popelín
ligero, telas
de crep

31¹/₂" -
34¹/₄"
(80-87 cm)

41¹/₂"
(105 cm)

26¹/₂" - 29¹/₄"
(67-74 cm)

48" - 66¹/₄"
(122-168 cm)

23" - 27¹/₄" (58-69 cm)