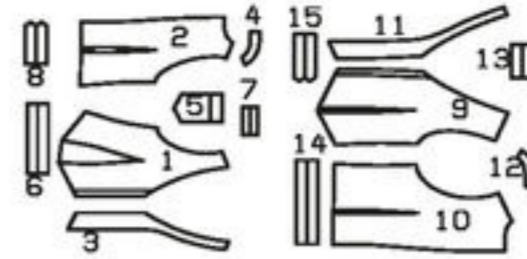


**VEST • GILET • CHALECO**

**ABCD:** semi-fitted,  
semi-ajusté, semi-ajustado.



Women • Dames • Señoras Sizes Tailles • Tallas		45 ins / 114 cm							55 ins / 140 cm						
		US Eur.	6 32	8 34	10 36	12 38	14 40	16 42	18 44	6 32	8 34	10 36	12 38	14 40	16 42
AB	yds	1	1	1	1	1 1/8	1 1/8	1 1/8	7/8	7/8	7/8	7/8	7/8	7/8	7/8
	m	0.90	0.90	0.90	0.90	0.95	0.95	0.95	0.80	0.80	0.80	0.80	0.80	0.80	0.80
			*	*	*	*	*	*	*	*	*	*	*	*	*
Men Hommes • Caballeros Sizes Tailles • Tallas		45 ins / 114 cm							55 ins / 140 cm						
		US Eur.	34 44	36 46	38 48	40 50	42 52	44 54	34 44	36 46	38 48	40 50	42 52	44 54	
CD	yds	1 1/4	1 1/4	1 1/4	1 1/4	1 5/8	1 5/8	1 1/8	1 1/8	1 1/8	1 1/8	1 1/8	1 1/8	1 1/8	
	m	1.10	1.10	1.10	1.10	1.35	1.35	0.95	0.95	0.95	0.95	0.95	1.00	1.00	
			*	*	*	*	*	*	*	*	*	*	*	*	

★ without nap • sans sens • sin dirección

Lightweight  
denims, linen,  
cotton fabrics

Toile de jean  
légère, lin,  
cotonnade

Telas ligeras  
tejanas, lino,  
géneros de  
algodón

**ABCD:**  
Interfacing • triplure  
entretela  
24" x 28"  
(60 cm x 70 cm)

AB: 41"-49"  
(105-125 cm)  
CD: 49"-53"  
(125-135 cm)

AC: 4x  
BD: 6x

**D**  
34-38 (44-48): 5" (12 cm)  
40-44 (50-54): 5 1/2" (14 cm)

**A**

**B**

AB: 18 1/8" - 19 1/4"  
(46-49 cm)

**C**

**D**

CD: 21 3/4" - 23 1/4"  
(55-59 cm)