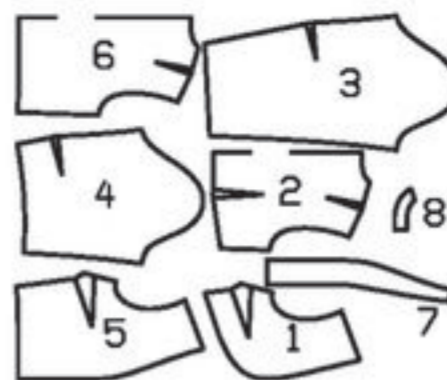


BOLERO

ABC: semi-fitted, semi-ajusté, semi-ajustado.



		45 ins / 114 cm								55 ins / 140 cm							
Sizes	US	10	12	14	16	18	20	22	10	12	14	16	18	20	22		
Tailles • Tallas	Eur.	36	38	40	42	44	46	48	36	38	40	42	44	46	48		
A single edge scalloped un bord festonné canto ondulado a un lado	yds	1 1/8	1 1/4	1 1/4	1 3/8	1 3/8	1 1/2	1 1/2	1 1/8	1 1/4	1 1/4	1 3/8	1 3/8	1 1/2	1 1/2		
	m	1.00	1.05	1.10	1.15	1.20	1.25	1.25	1.00	1.05	1.10	1.15	1.20	1.25	1.25		
B	yds	1	1 1/8	1 1/8	1 1/8	1 3/8	1 3/8	1 3/8	1	1	1	1	1 1/8	1 1/8	1 1/8		
	m	0.85	0.95	0.95	0.95	1.20	1.20	1.20	0.85	0.90	0.90	0.90	0.95	0.95	0.95		
C	yds	1 1/4	1 1/4	1 3/8	1 5/8	1 5/8	1 3/4	1 3/4	1 1/4	1 1/4	1 1/4	1 1/4	1 1/4	1 3/8	1 3/8		
	m	1.05	1.05	1.15	1.40	1.40	1.60	1.60	1.05	1.05	1.05	1.10	1.10	1.15	1.15		

→ with nap • avec sens • con dirección

A: Lace fabric
B: Novelty fabrics
C: Satin, brocade

A: dentelle
B: tissu structuré
C: satin, brocart

A: Tela de encaje
B: géneros de fantasía
C: satén, brocado

AB:

A: 1 1/4 – 2 3/8 yds
(1.60 m – 2.10 m)
B: 2 3/8 – 3 yds
(2.30 m – 2.70 m)

C:
Interfacing • triplure • entretela
36" x 24" (90 cm x 60 cm)

AB: 14 1/4" – 15 1/2"
(36 cm – 39 cm)
C: 16 1/2" – 17 3/4"
(42 cm – 45 cm)

C: 34 3/4" – 45"
(88 cm – 114 cm)