

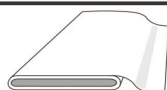


PYJAMA PYJAMAS PIJAMA

ABCD: weit, ample, loose fitting, ampio

		114 cm			140 cm		
		M	L	XL	M	L	XL
Größen Tailles Sizes Tallas	 Eur.	40/42	44/46	48/50	40/42	44/46	48/50
Größen Tailles Sizes Tallas	 Eur.	46/48	50/52	54/56	46/48	50/52	54/56
A	m	2,70	2,70	2,70	2,45	2,45	2,45
B	m	2,80	2,80	2,80	2,60	2,60	2,60
C	m	2,50	2,50	2,50	2,15	2,15	2,15
D	m	2,50	2,50	2,50	2,15	2,15 <td 2,15	



Baumwollpopeline,
Satin, Seide, Flanell

Cotton poplin,
satin, silk, flannel

Popeline de coton,
satin, soie, flanelle

Katoenen popeline,
satijn, zijde, flanel

Bomullspoplin,
satin, siden, flanel

Popelín de algodón,
satén, seda, franela

AB

Einlage • interfacing • triplure •
tussenvoering • mellanlägg •
entretela



B

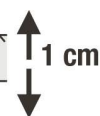


3,10 - 3,20 m

CD



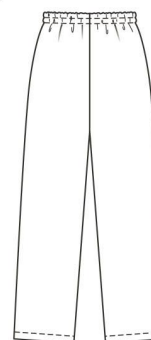
1,70 - 2,10 m



A



CD



105 - 111 cm

B



AB:
76 - 78 cm



48 - 52 cm

Sämtliche Modelle stehen unter Urheberschutz, gewerbliches Nacharbeiten ist nicht gestattet.

All models are copyrighted. Reproduction for commercial purposes is not allowed.

Tous les modèles sont sous la protection des droits d'auteur, leur reproduction à des fins commerciales est strictement interdite.

© by Verlag Aenne Burda GmbH & Co. KG, Hubert-Burda-Platz 2, 77652 Offenburg, Germany. Made in Germany.